

HANDMADE CHARLOTTE



MERRYMAKER STENCIL DRESS
free pattern & tutorial

Materials + Supplies

FABRIC + NOTIONS

- Thread
- ½ yard utility canvas (for bodice)
- 1 yard light/neutral cotton fabric (for skirt + collar)
- 1½ yards contrasting cotton fabric (for skirt lining)
- Contrasting bias banding (for armholes)
- 12-inch neck-type zipper
- Hook & eye (optional)

HANDMADE CHARLOTTE STENCILS

- 4368 - Patterns
- 4369 - Party

FOLK ART ACRYLIC PAINT

- Textile Medium
- Pure Gold Metallic
- Six colors of your choice (collar & pendant border)
- Stencil brushes/pouncers

OTHER SUPPLIES

- Contact paper (optional)
- Serger (optional)
- Tape

Getting started

STEP ONE

Print out all of the pattern pieces and tape them together BEFORE cutting your fabric.

STEP TWO

Follow the directions printed on the back of the textile medium and mix with paint colors of your choice.

It may help to do just one color at a time—that way, you can keep your workspace as neat & tidy as possible.

STEP THREE

Stencil each pattern piece and allow it to dry before heading over to your sewing machine.

STEP FOUR

Serge any seams you'd like for nice, clean finish. However, there's no need to serge the skirt hem or the bodice armholes.

Sewing Instructions

STEP ONE

On Bodice Front and Back, stitch along armhole at 5/8". Trim away seam allowance up to 1/8" from stitching. This is where your bias binding will be applied in a later step.

STEP TWO

Sew Bodice Front darts at marks. Press Darts towards the center of the Bodice Front. Stitch ½" from upper edge of skirt front. Clip to stitching. With RIGHT sides together, join Skirt Front to Bodice matching centers; press seam up.

STEP THREE

Make Darts at Bodice Back waistline. Press towards the center. Join center seam of Skirt Back below notch. Baste seam under 5/8" on back opening edges. Stitch ½" from upper edge of skirt front. Clip to stitching. With RIGHT sides together, join skirt to Bodice Back, placing Skirt Back opening 5/8" in on Bodice seam allowance. Join Bodice Back to Front at shoulder, easing Back to fit. Press seams open.

STEP FOUR

Join side seam of Bodice and Skirt sections, matching waistline seams.

STEP FIVE

Sew Neck Facings together at shoulder seam. Press open. Stitch lower edge at ¼". Press under at stitching and then under ¼" again. Stitch seam.

STEP SIX

With RIGHT sides together, sew collar front and back together at 5/8" leaving notched edge open. Trim seam and turn. Baste collar to neck edge, matching center front. With RIGHT sides together, place neck facing over collar and stitch at 5/8". Trim seam and turn facing to the inside of the dress. Press thoroughly and tack facing down at shoulder seams. Baste under 5/8" on Bodice Back opening edges.

STEP SEVEN

Join center seam of Skirt Back Lining section just below notch. Join side seams. Stitch $\frac{1}{2}$ " from upper edge of skirt front. Baste under $\frac{5}{8}$ " on back opening edges. With RIGHT sides together, join Lining to Skirt along lower edge matching centers and side seams. Trim seam. Turn lining to INSIDE. Clip upper edge of Lining to stitching and sew in place to waistline seam, having back opening edges of skirt even.

STEP EIGHT

Place closed zipper under back opening edges, placing lower end of zipper at lower end of opening, having edges meeting at center of zipper. Baste on each side of opening and across lower end turning in ends of zipper tape, Sew in place using the coils as a guide along your presser foot. Sew hook and eye at neck edge.

STEP NINE

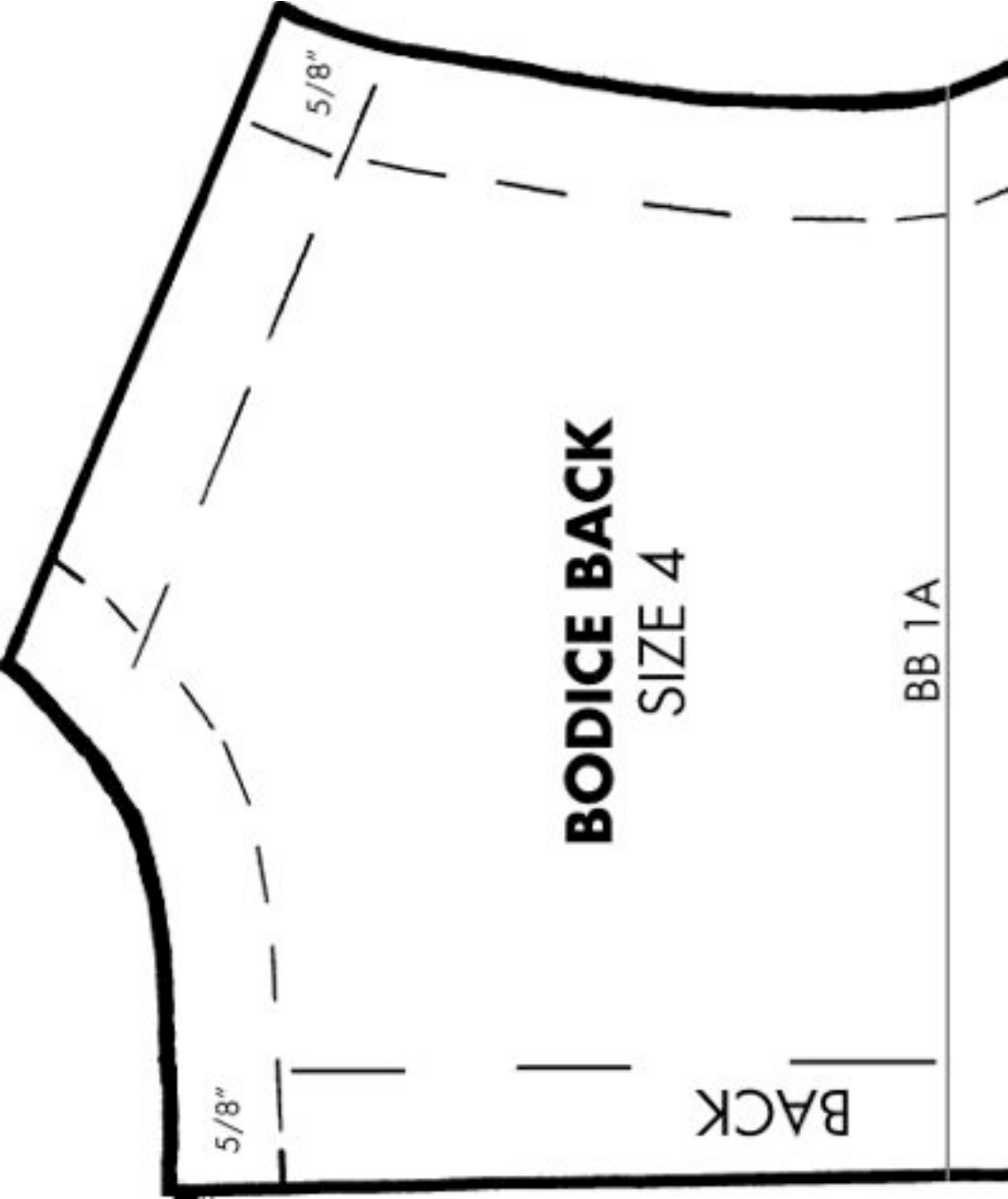
Purchase store bought binding or make your own cutting $1\frac{1}{2}$ " wide strips of fabric on the bias. Fold one long edge under $\frac{1}{4}$ ". Find the center of your strip and with RIGHT sides together and fold facing up, pin raw edge of binding to raw edge of armhole at shoulder seam. Pin binding along armhole until you get around about a quarter from the side seam on each side. Leave this area free for now and the binding loose. Sew around armhole from pin to pin at $\frac{1}{4}$ ". Join ends of binding. Use the video link provided below if you need clarification for how to join ends together so that no raw edge is shown.

Video tutorial for joining ends: <http://www.youtube.com/watch?v=Ot7Trk6J2Vw>

STEP TEN

Now sew the remainder of the binding to the armhole. Fold the other edge over to the inside and pin in place, making sure to pin just over your previous stitch line. Topstitch.

Press Dress thoroughly.



BODICE BACK
SIZE 4

BACK

BB 1A

5/8"

5/8"

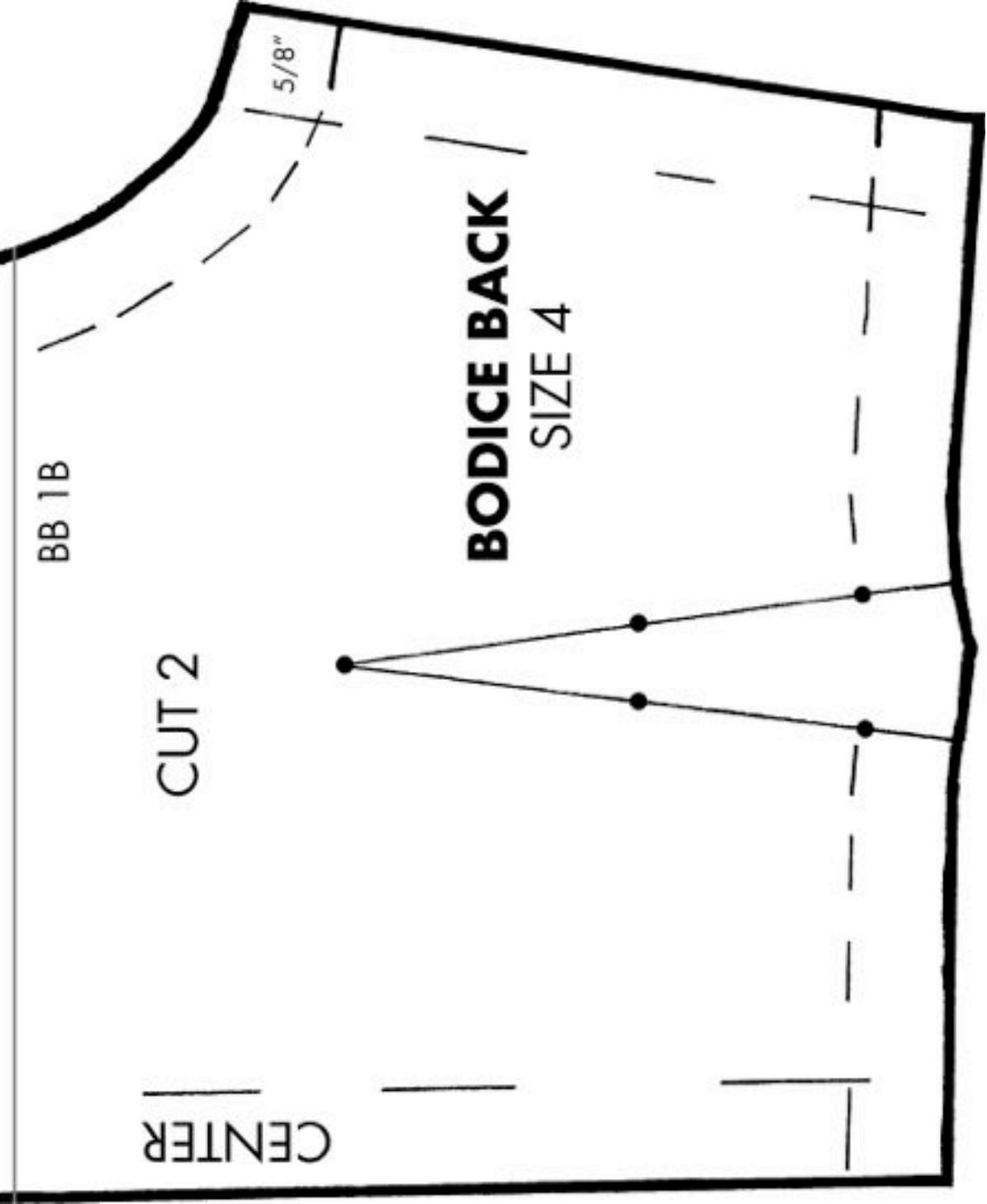
BB 1B

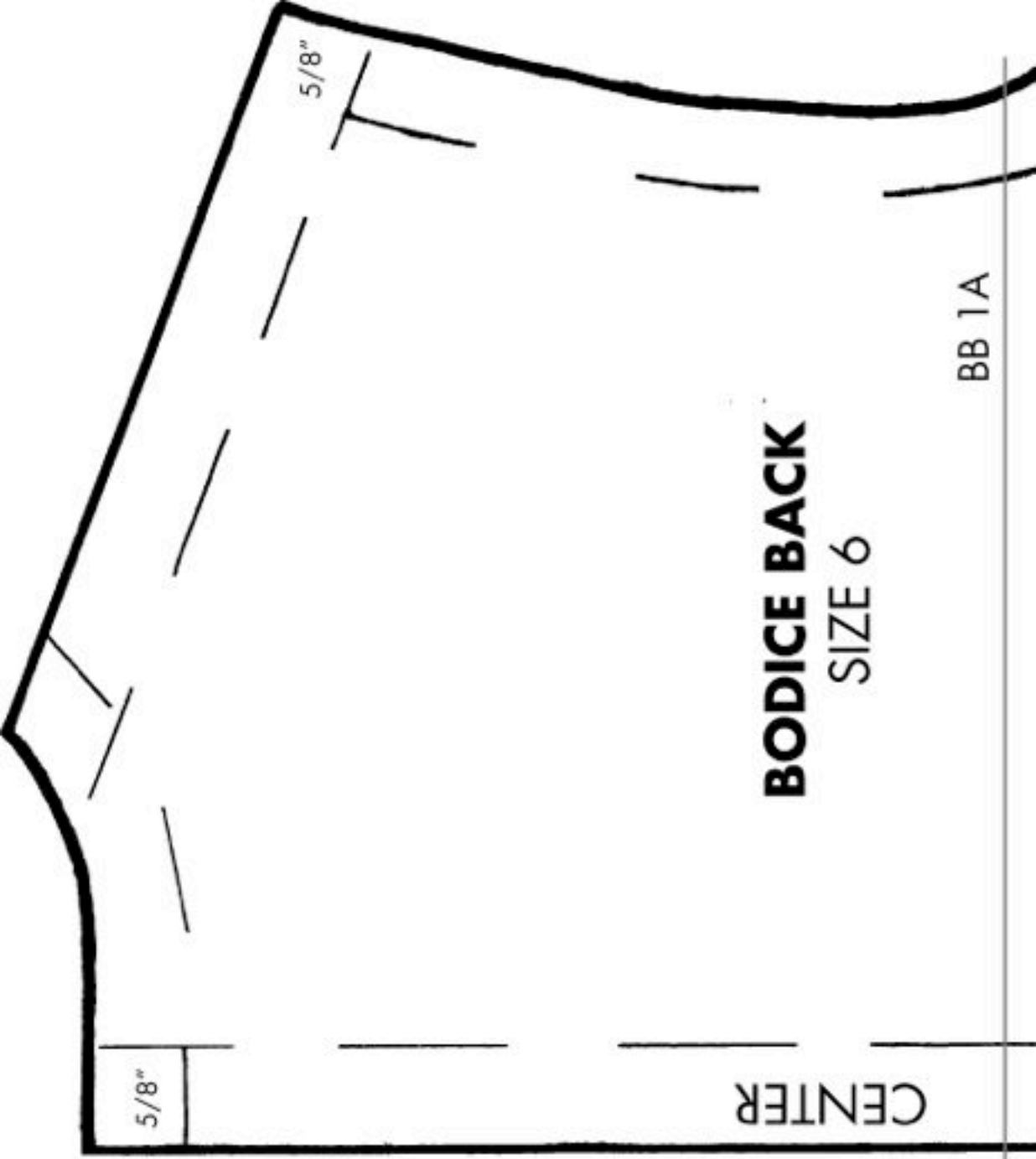
CENTER

CUT 2

5/8"

BODICE BACK
SIZE 4





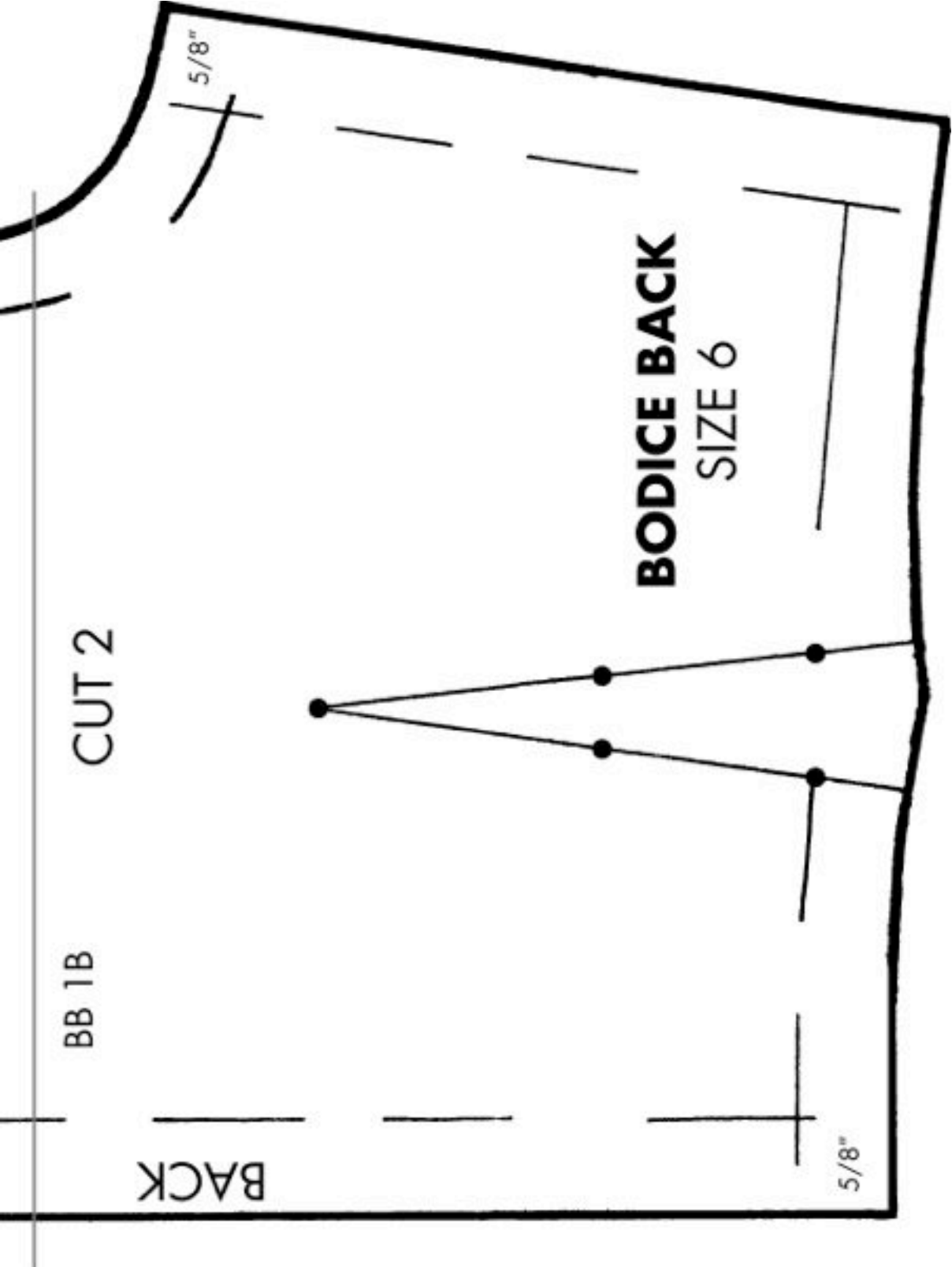
5/8"

5/8"

CENTER

BODICE BACK
SIZE 6

BB 1A



CUT 2

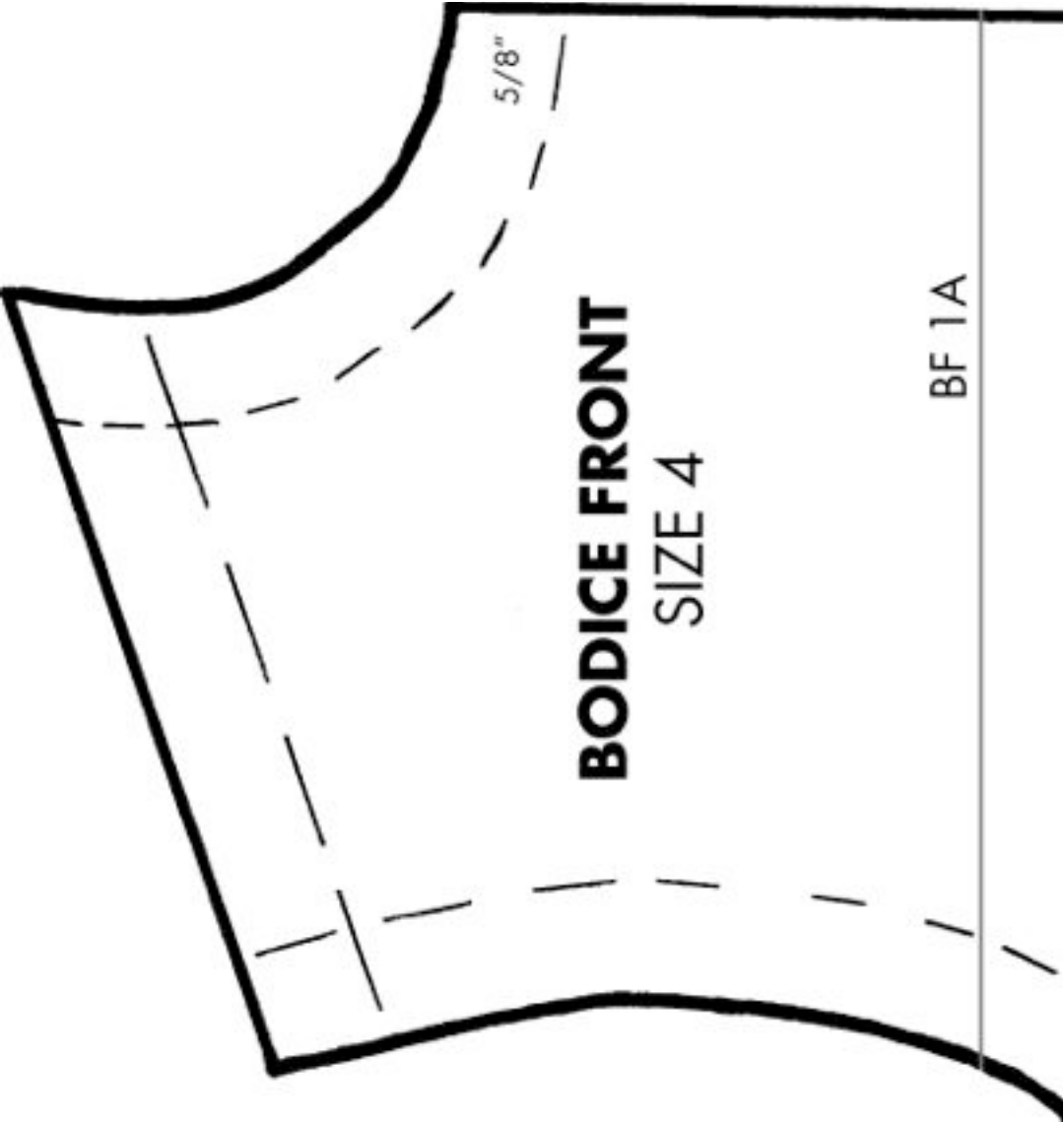
BB 1B

BACK

5/8"

BODICE BACK
SIZE 6

5/8"



BODICE FRONT
SIZE 4

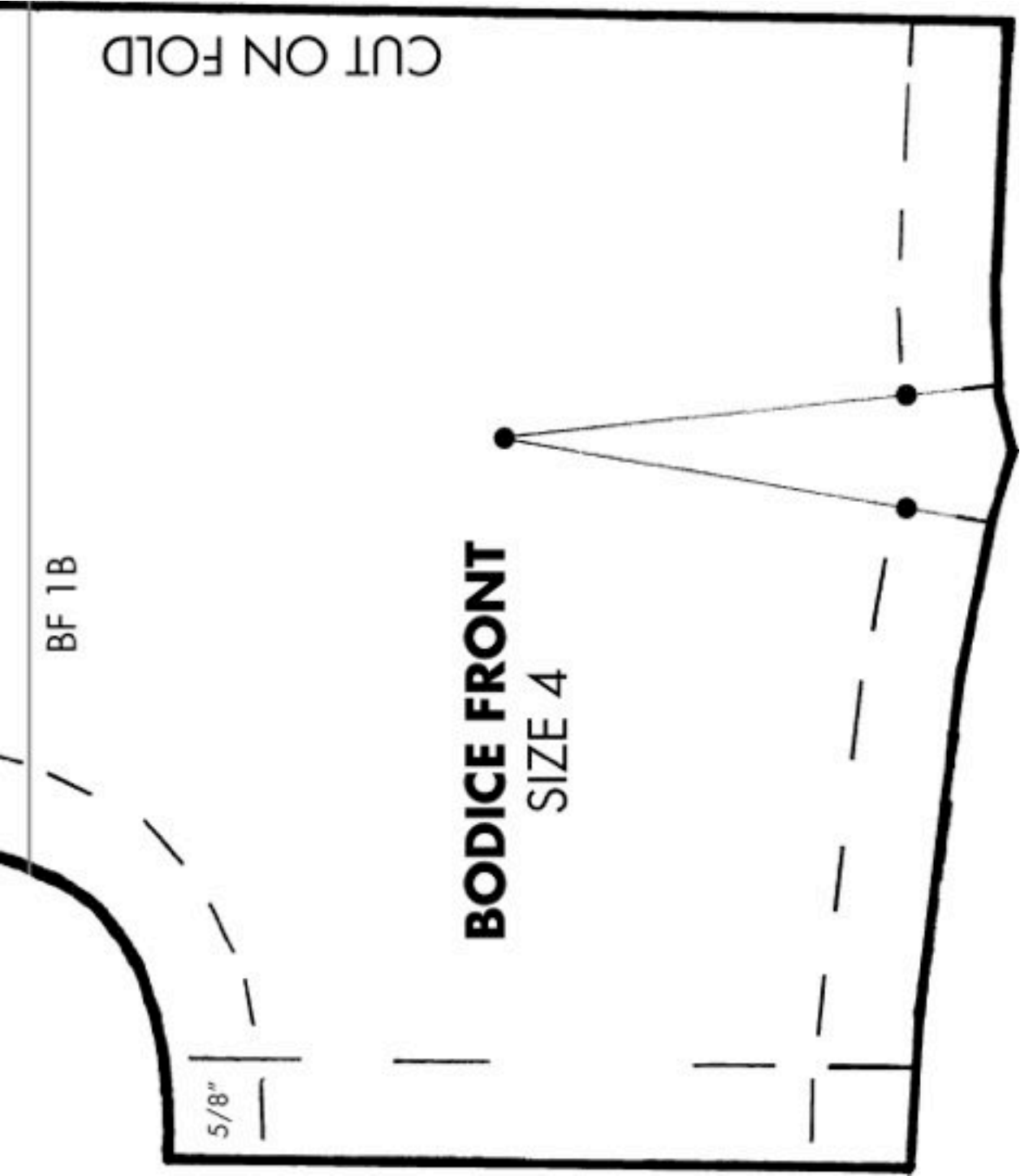
BF 1A

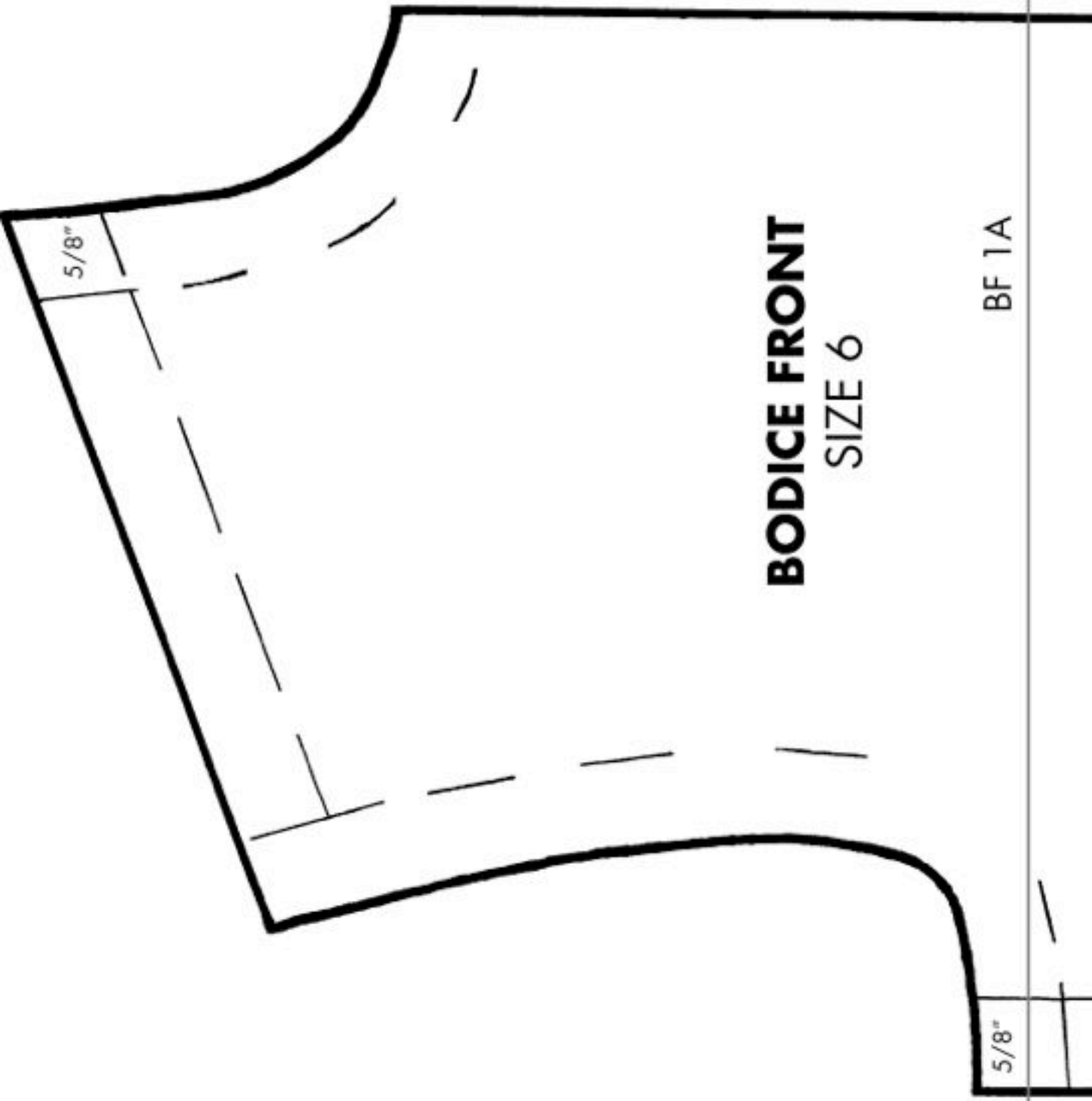
CUT ON FOLD

BF 1B

5/8"

BODICE FRONT
SIZE 4





BODICE FRONT
SIZE 6

BF 1A

5/8"

5/8"

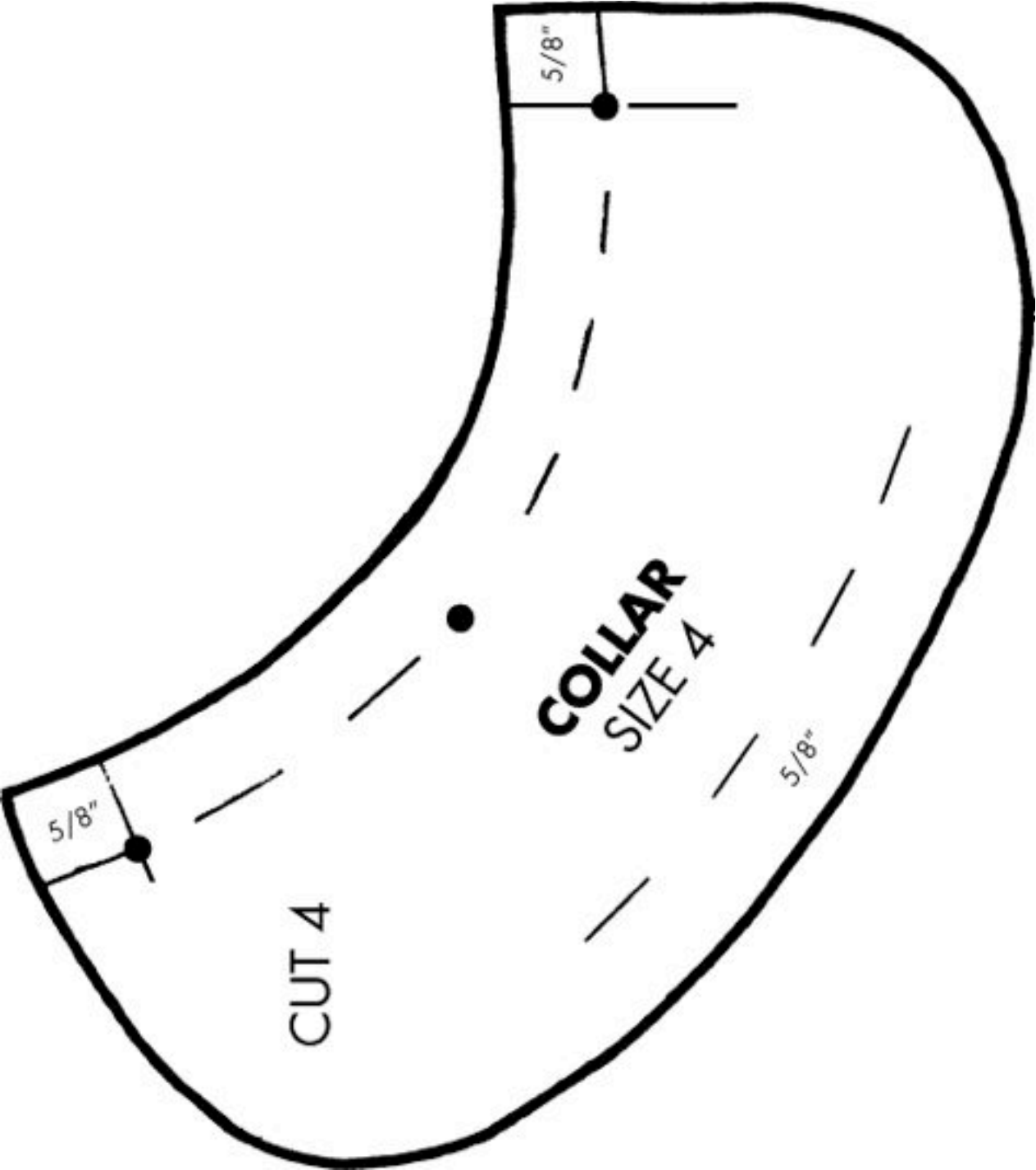
5/8"

BF 1B

BODICE FRONT
SIZE 6

5/8"

CUT ON CENTER FOLD



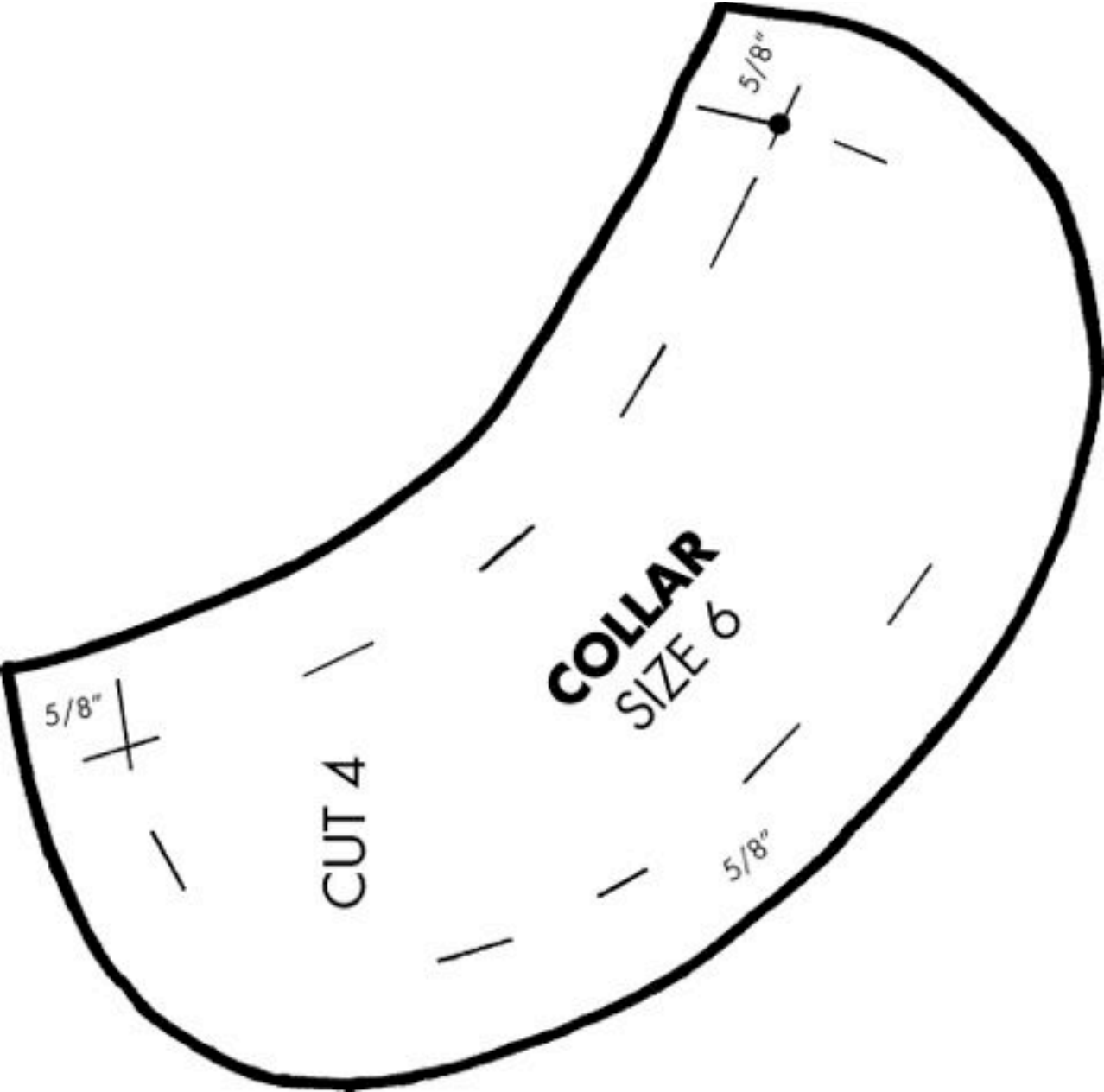
**COLLAR
SIZE 4**

CUT 4

5/8"

5/8"

5/8"



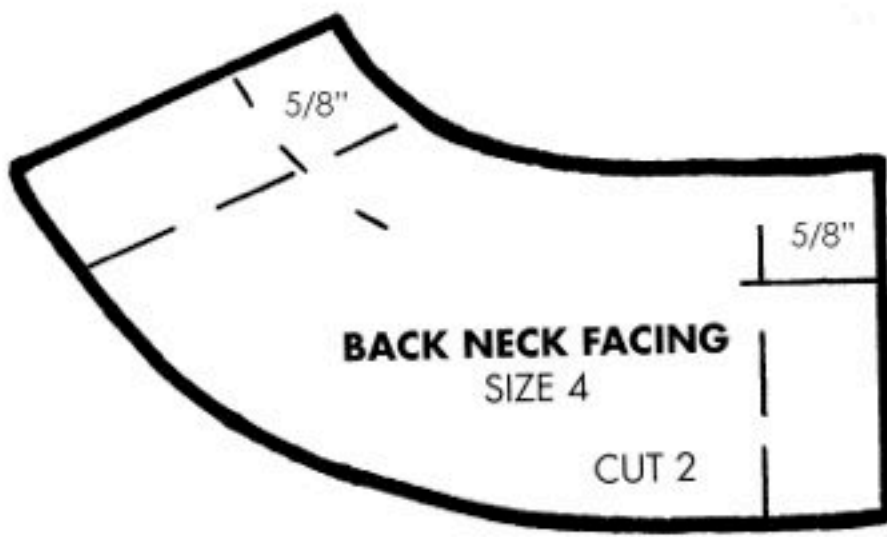
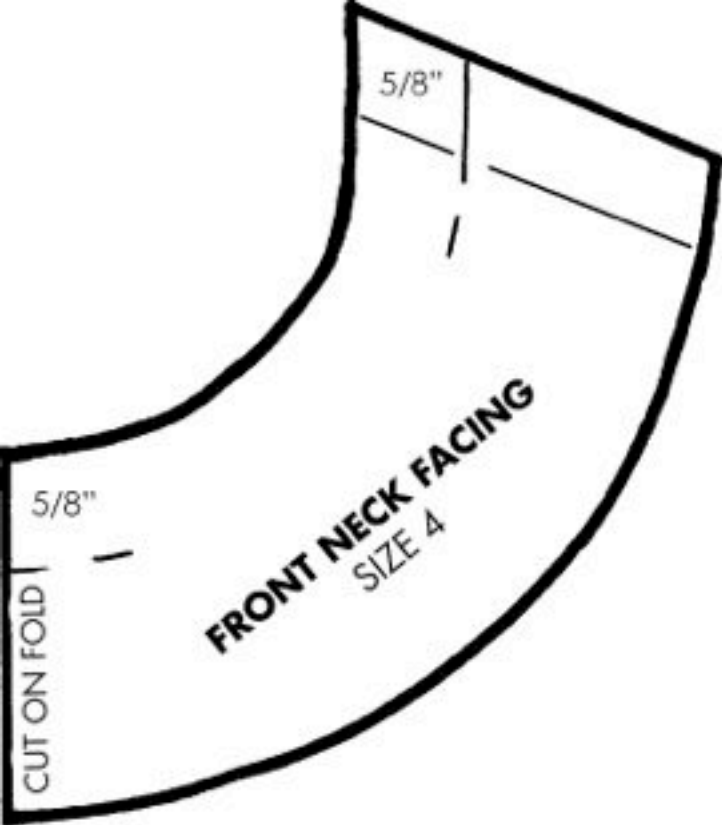
COLLAR
SIZE 6

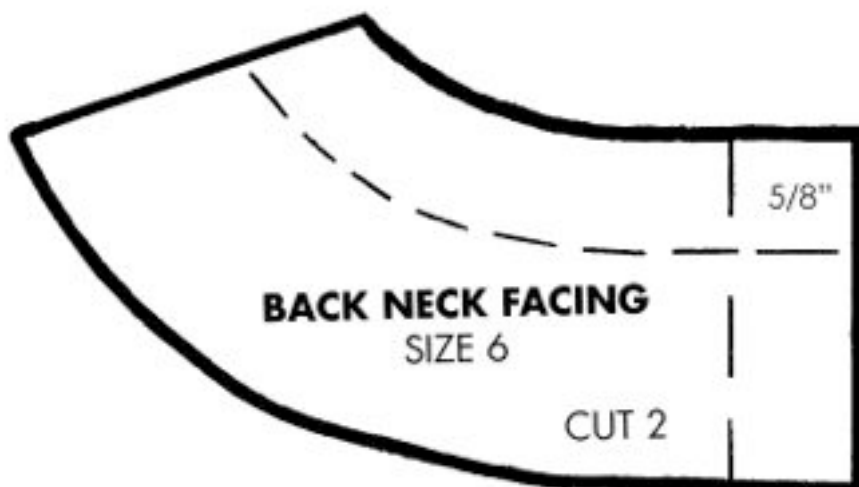
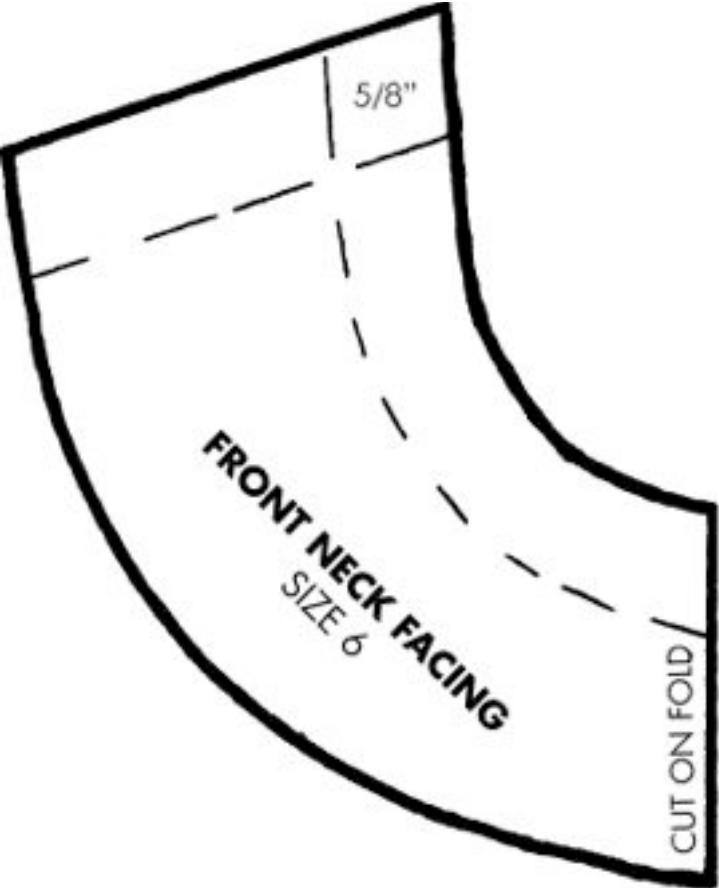
CUT 4

5/8"

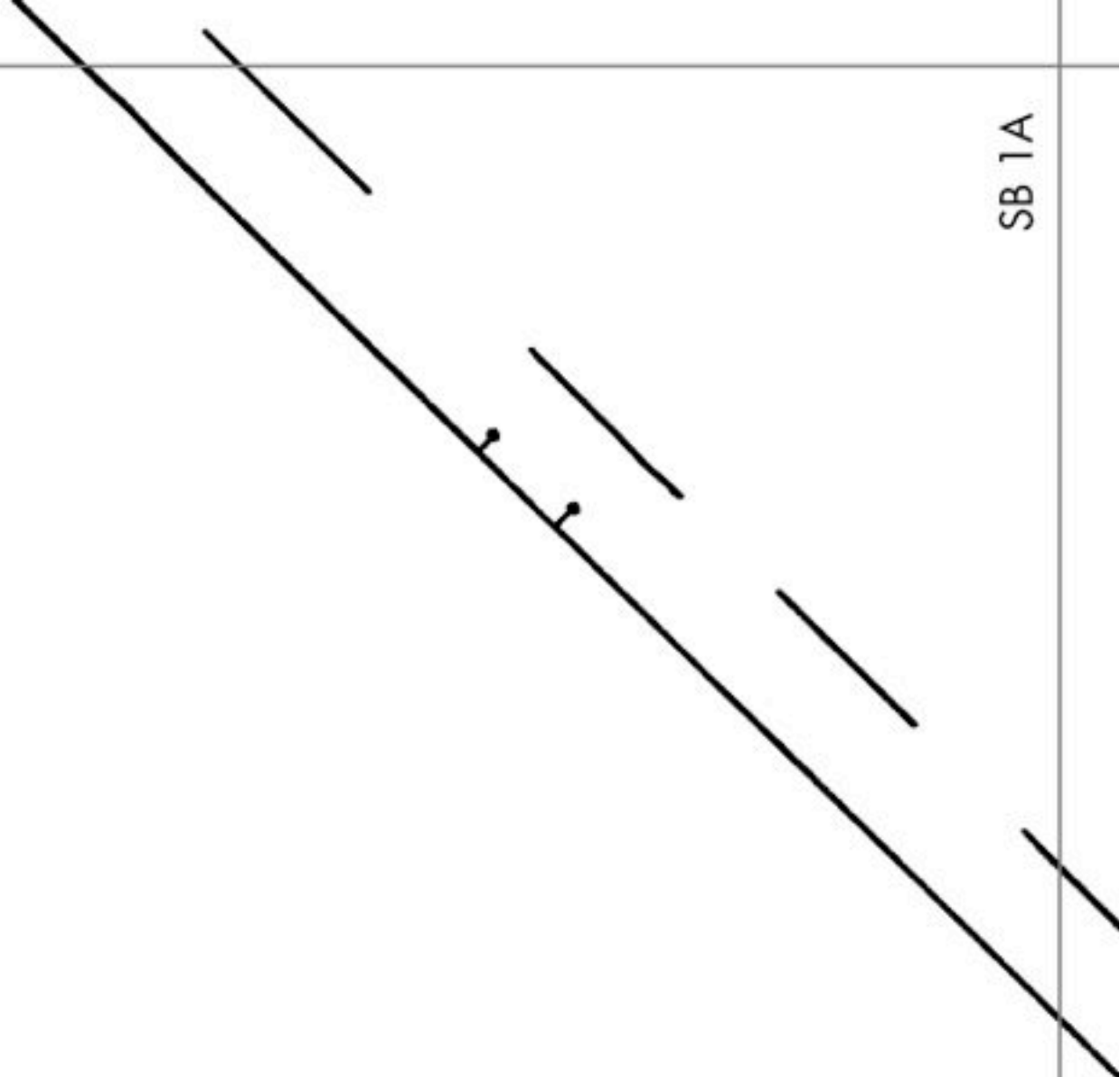
5/8"

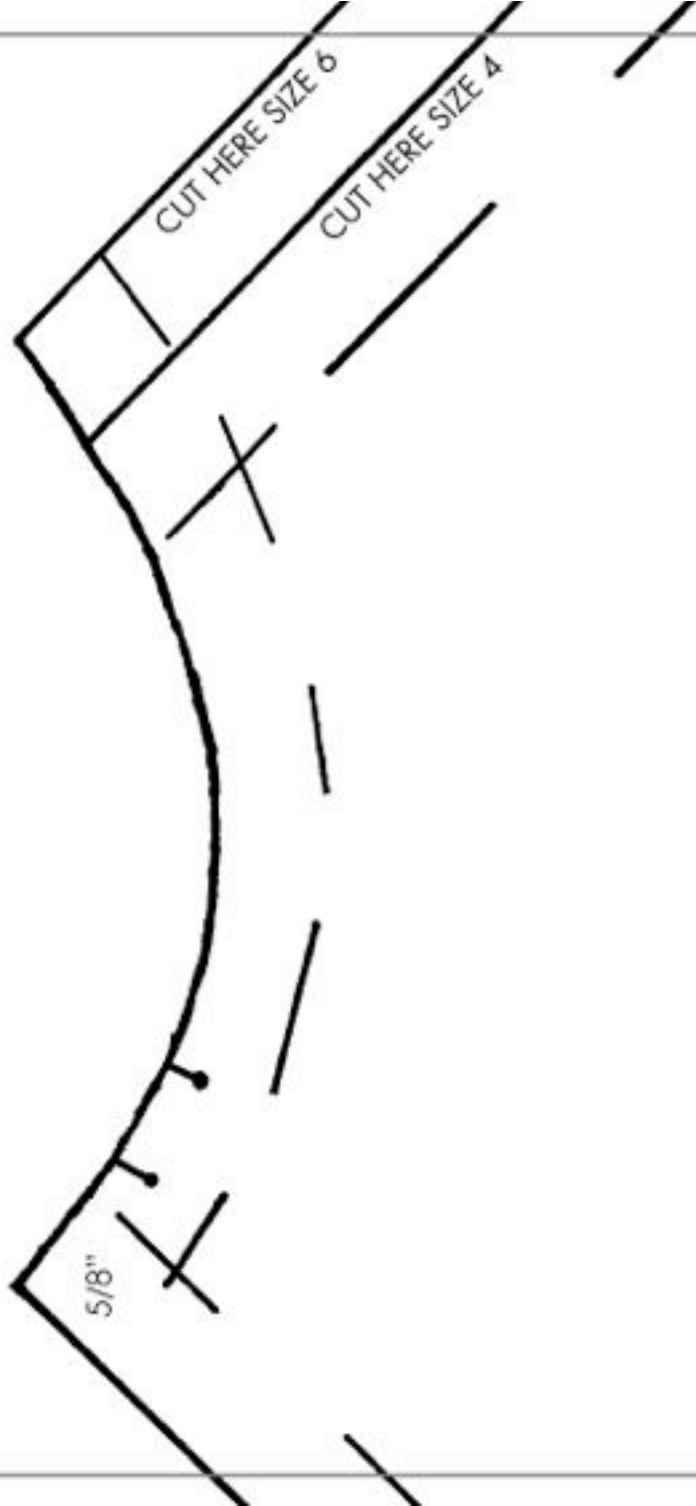
5/8"



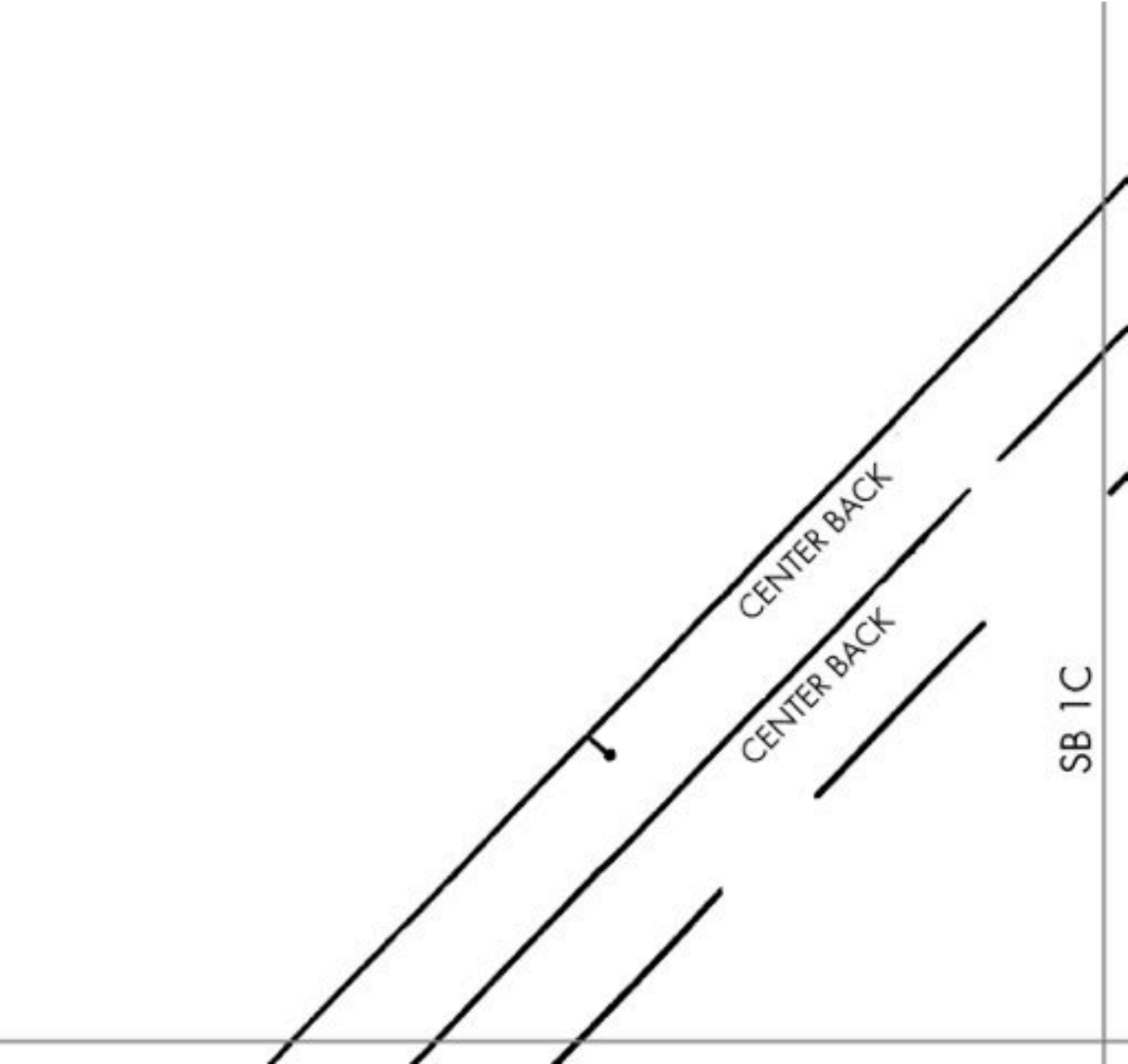


SB 1A





SKIRT BACK
SIZES 4 & 6



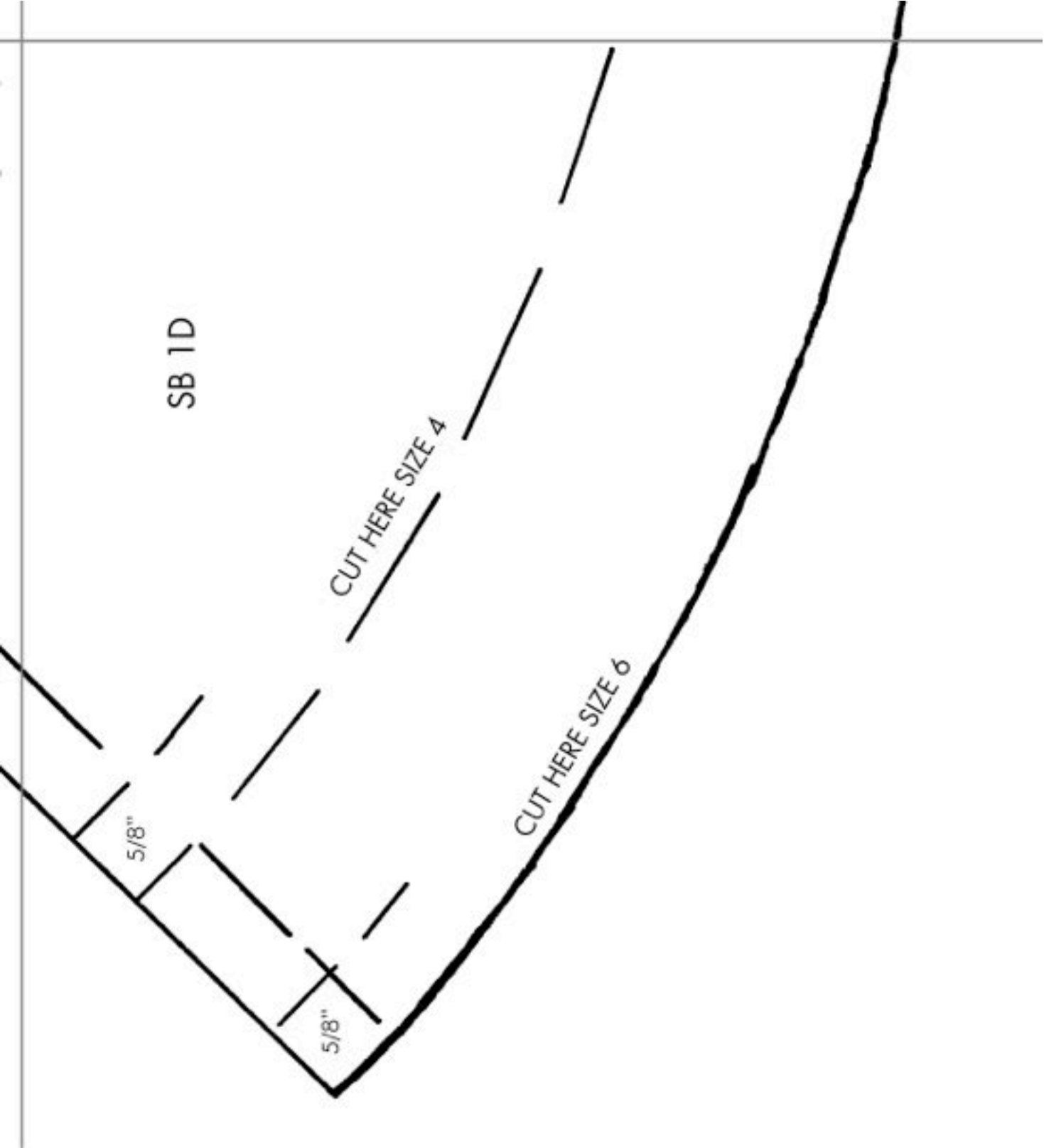
SB 1D

CUT HERE SIZE 4

CUT HERE SIZE 6

5/8"

5/8"



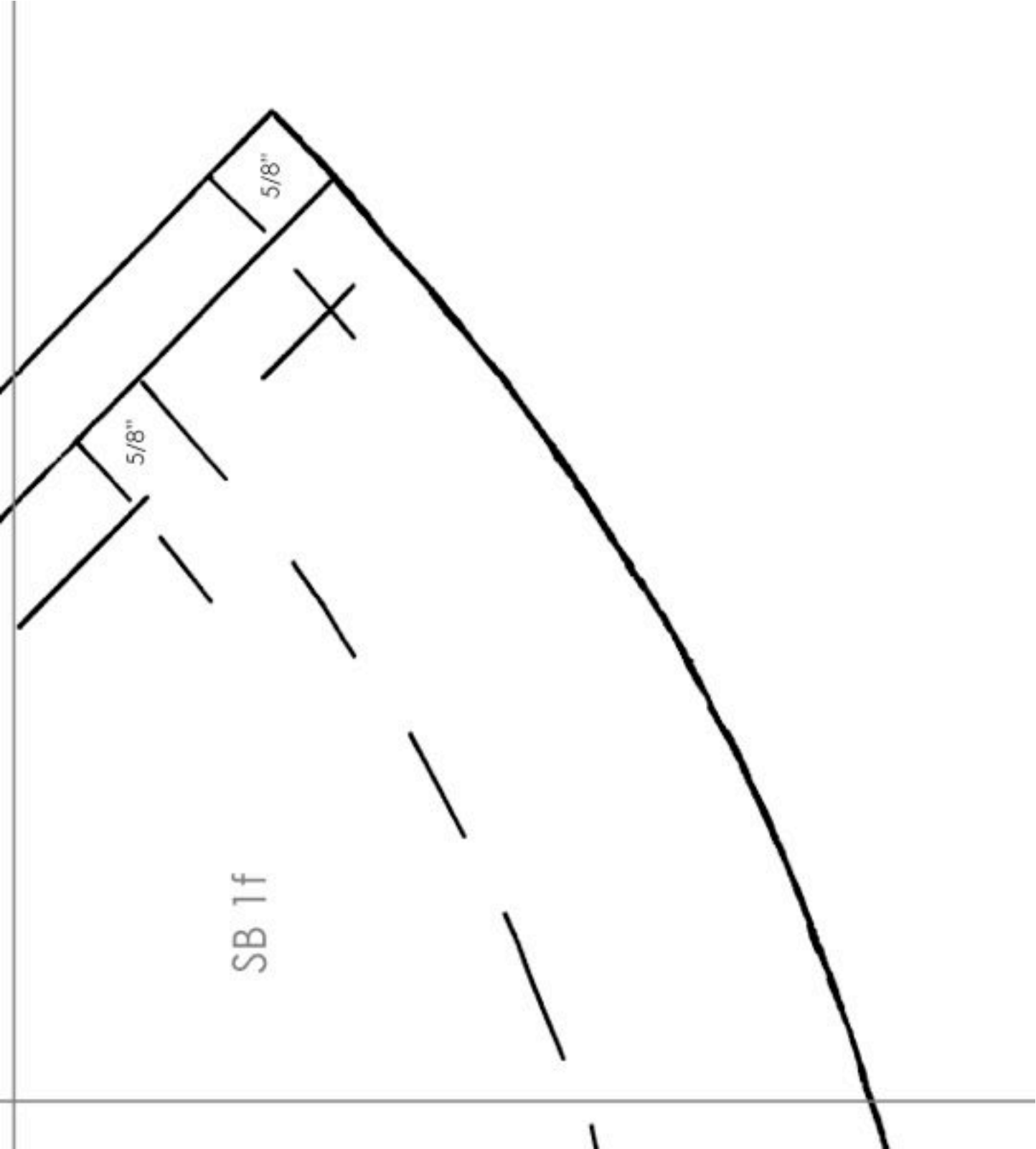
size 4 & 6

CUT 2

(+2 in contrasting color for lining)

SB 1 e





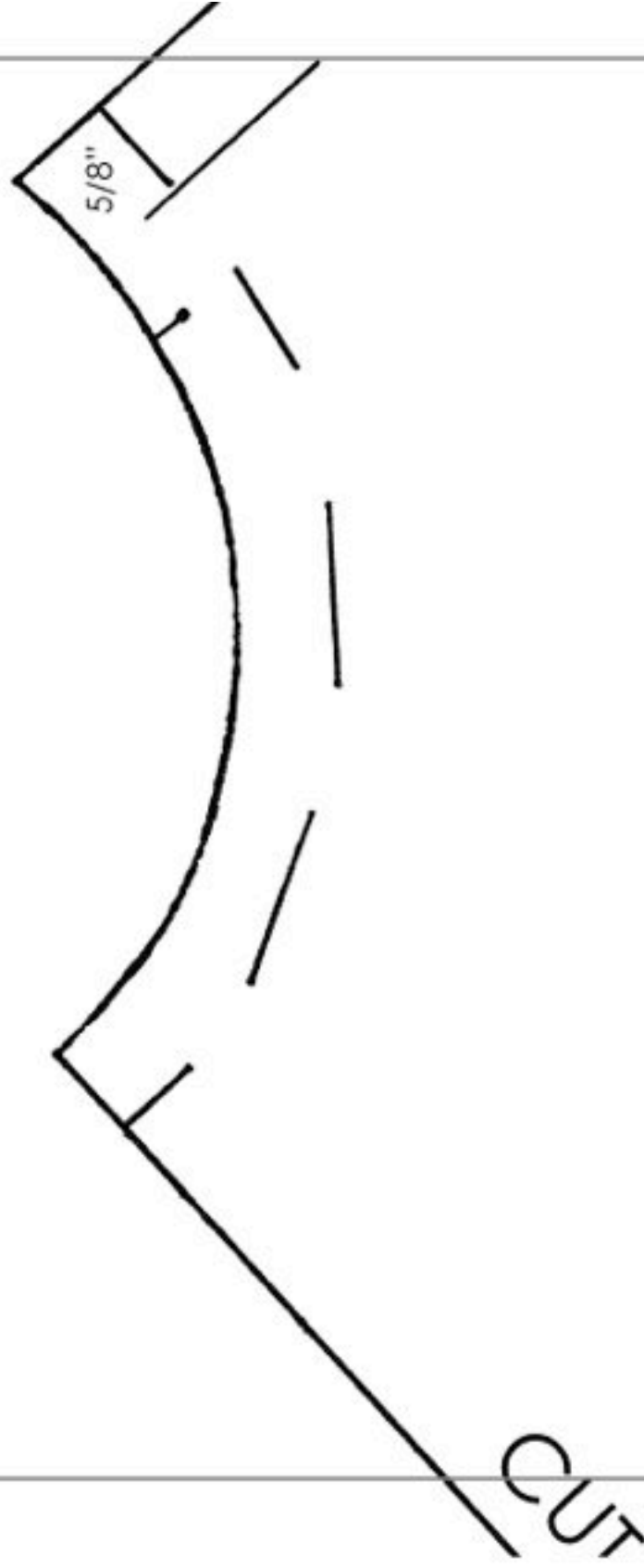
SB 1f

5/8"

5/8"

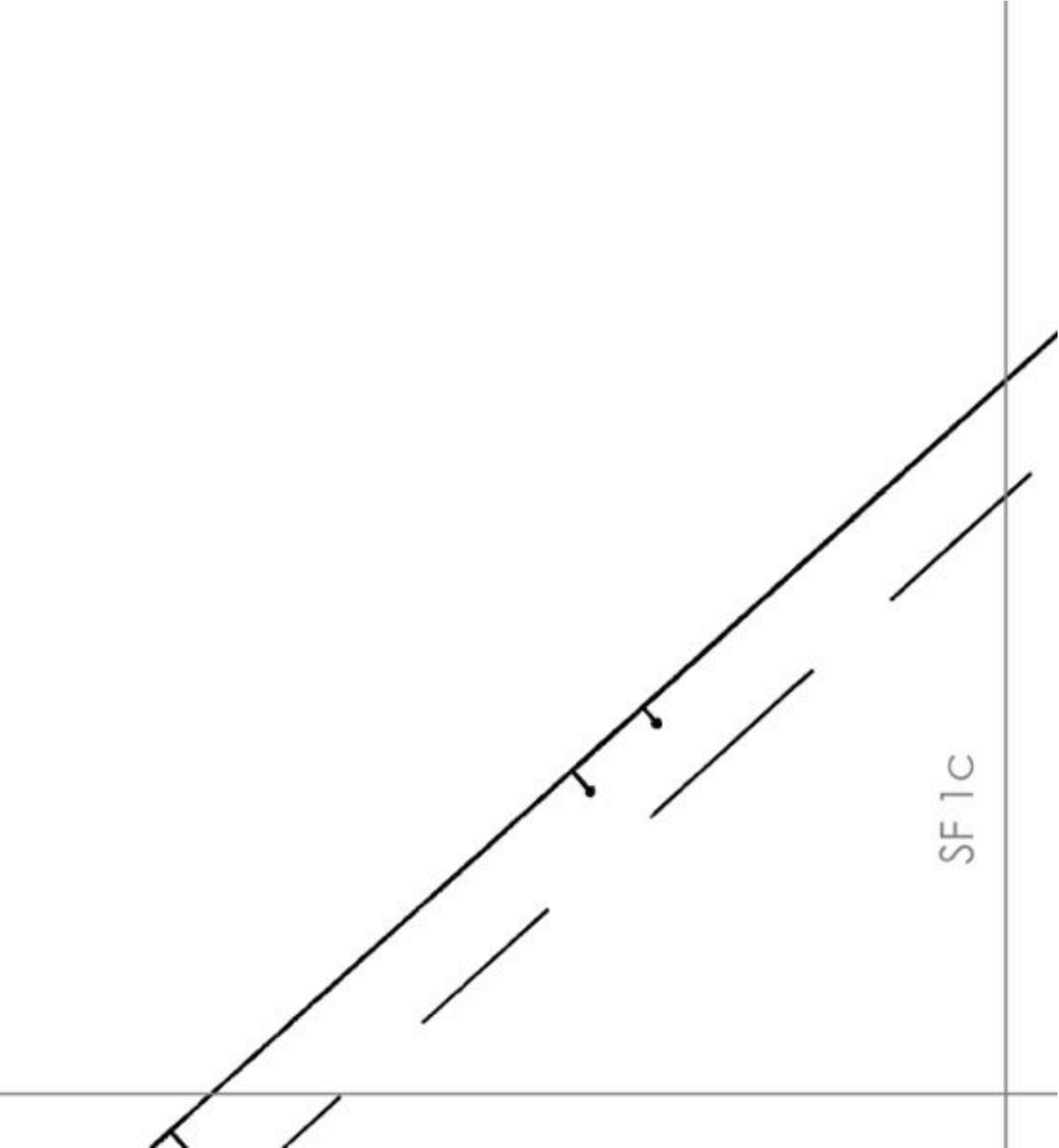
CUT ON FOLD

SF 1a



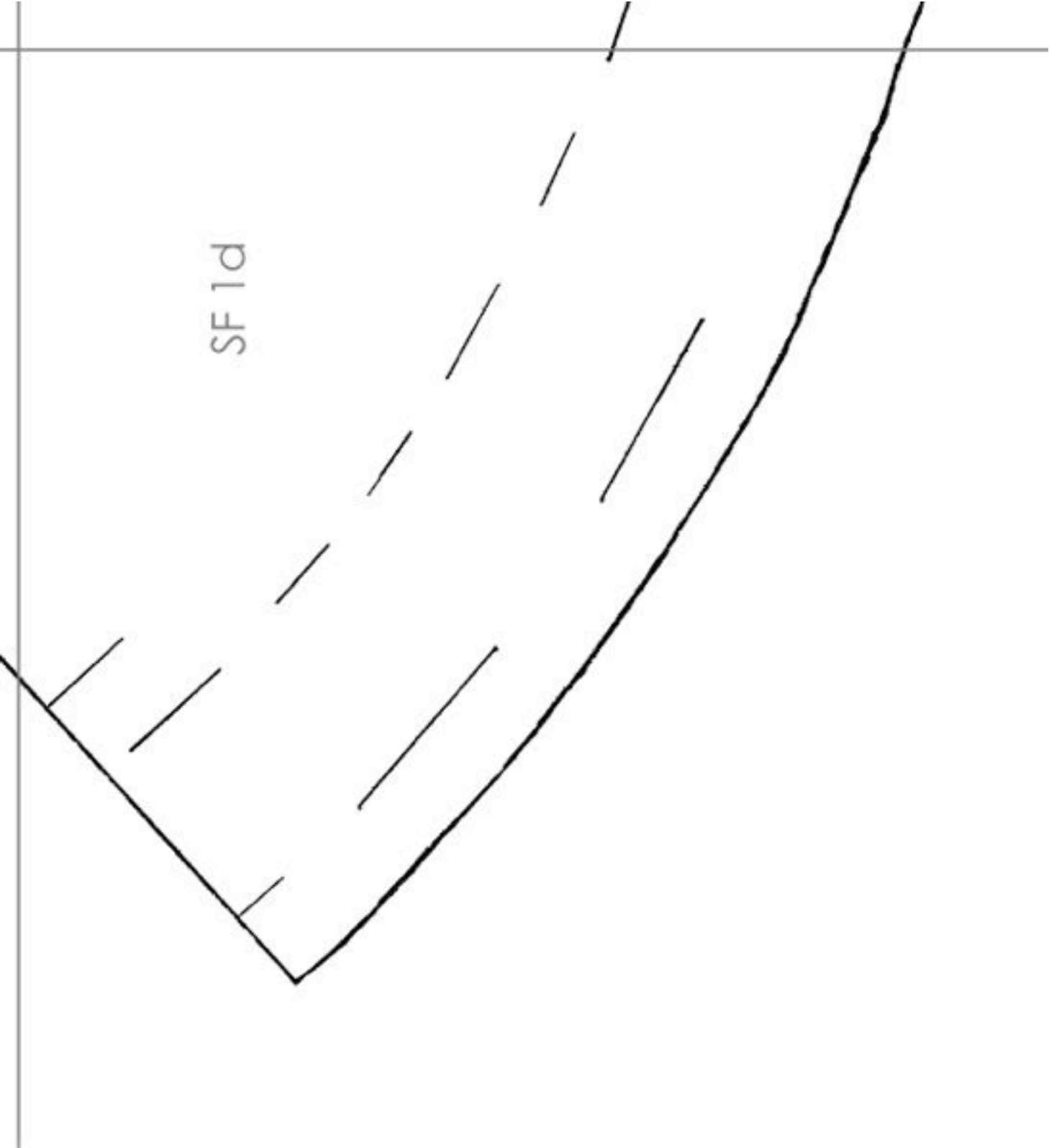
Skirt Front

SF 1b



SF 1C

SF 1d



size 4 & 6

CUT 1

(+1 contrasting color for lining)

SF 1e



