

HANDMADE
CHARLOTTE

Math Facts Stencil Dress

Pattern for Sizes 4 & 6

Materials + Supplies

FABRIC + NOTIONS

- Thread
- ½ yard utility canvas (for bodice)
- 1 yard light/neutral cotton fabric
- 1 yards contrasting cotton fabric (for skirt lining)
- 12-inch neck-type zipper
- Hook & eye (optional)

HANDMADE CHARLOTTE STENCILS

- 4368 - Patterns

FOLK ART ACRYLIC PAINT

- Textile Medium
- Orange Poppy (for the stripe)
- Five fun colors of your choice (for the numbers)
- Stencil brushes/pouncers

OTHER SUPPLIES

- Contact paper (optional)
- Serger (optional)
- Tape

Getting started

STEP ONE

Print out all of the pattern pieces and tape them together BEFORE cutting your fabric.

STEP TWO

Follow the directions printed on the back of the textile medium and mix with paint colors of your choice.

STEP THREE

Stencil each pattern piece and allow it to dry before heading over to your sewing machine.

STEP FOUR

Serge any seams you'd like for nice, clean finish. However, there's no need to serge the neck/bodice armholes.

Sewing Instructions

STEP ONE: FRONT

Reinforce point at lower edge of bodice, by stitching along dotted seam lines indicated on pattern. Clip to stitching. Turn under 5/8" on LOWER edge of Bodice Front. Press. With RIGHT SIDES UP, lap and pin turned under edge of bodice front to seam line at upper edge of Skirt Front, matching notches and Center Fronts. Top-stitch close to turned under edge of bodice. Clip seam allowance of skirt as necessary for seam to lie flat.

STEP TWO: BACK

Turn under 5/8" on LOWER edge of Bodice Back. Press. With RIGHT SIDES UP, lap and pin turned under edge of Bodice Back to seam line at upper edge of Skirt Back, matching notches. Top-stitch close to turned under edge of bodice. Clip seam allowance of skirt as necessary for seam to lie flat.

STEP THREE: CENTER BACK SEAM

Stitch center back seam from lower edge to notch. Machine-baste opening edges together above notch. Press open.

STEP FOUR: ZIPPER

On INSIDE, center zipper face down over seam, with pull-tab ¾" down from neck edge. Hand-baste.

On the outside, machine stitch ¼" from seam with a zipper foot using the zipper coils as a guide. Remove basting.

STEP FIVE: SHOULDER SEAMS

Stitch Bodice Back to Bodice Front at shoulders.

STEP SIX: NECK FACING

Stitch back facings to front facing at shoulder. Stitch along lower edge at ¼". Press under at stitch line and press under again at ¼". Topstitch edge.

Pin Facing to neck edge, RIGHT SIDES TOGETHER, matching shoulder seams. Stitch at 5/8". Trim seam allowances and clip curves.

Press facing and seam allowances away from neck. Turn facing to INSIDE. Press. Tack facing to shoulder seams. Turn in back edges of facing and hem to zipper tapes.

STEP SEVEN: ARMHOLE RUFFLE

To gather ruffle, machine baste along lines indicated on pattern.

To narrow lower hem edge stitch 1/8" from raw edge on line of stitching. Press. Turn under again 1/4" and stitch in place. Press.

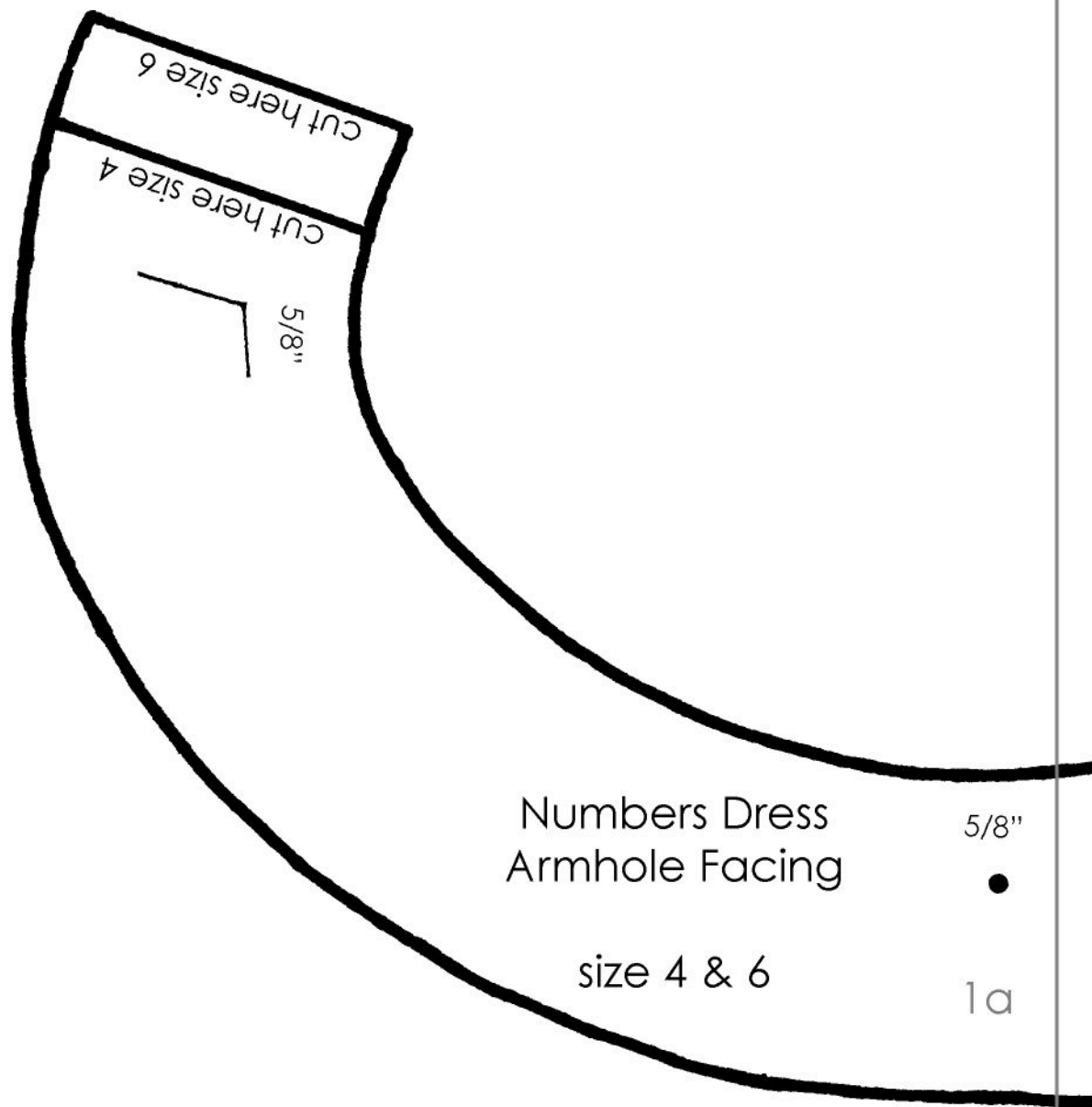
With **RIGHT SIDES TOGETHER**, pin each ruffle to bodice armhole. Draw up and adjust gather to fit. Hand-baste. With **RIGHT SIDES TOGETHER**, pin facing to bodice front and back (over ruffle). Matching centers and side seams. Stitch. Trim seam allowance and clip curves. Turn facing to **INSIDE**. Press. Open out armhole facing. Stitch side seams of dress and armhole facings, matching armhole seams.

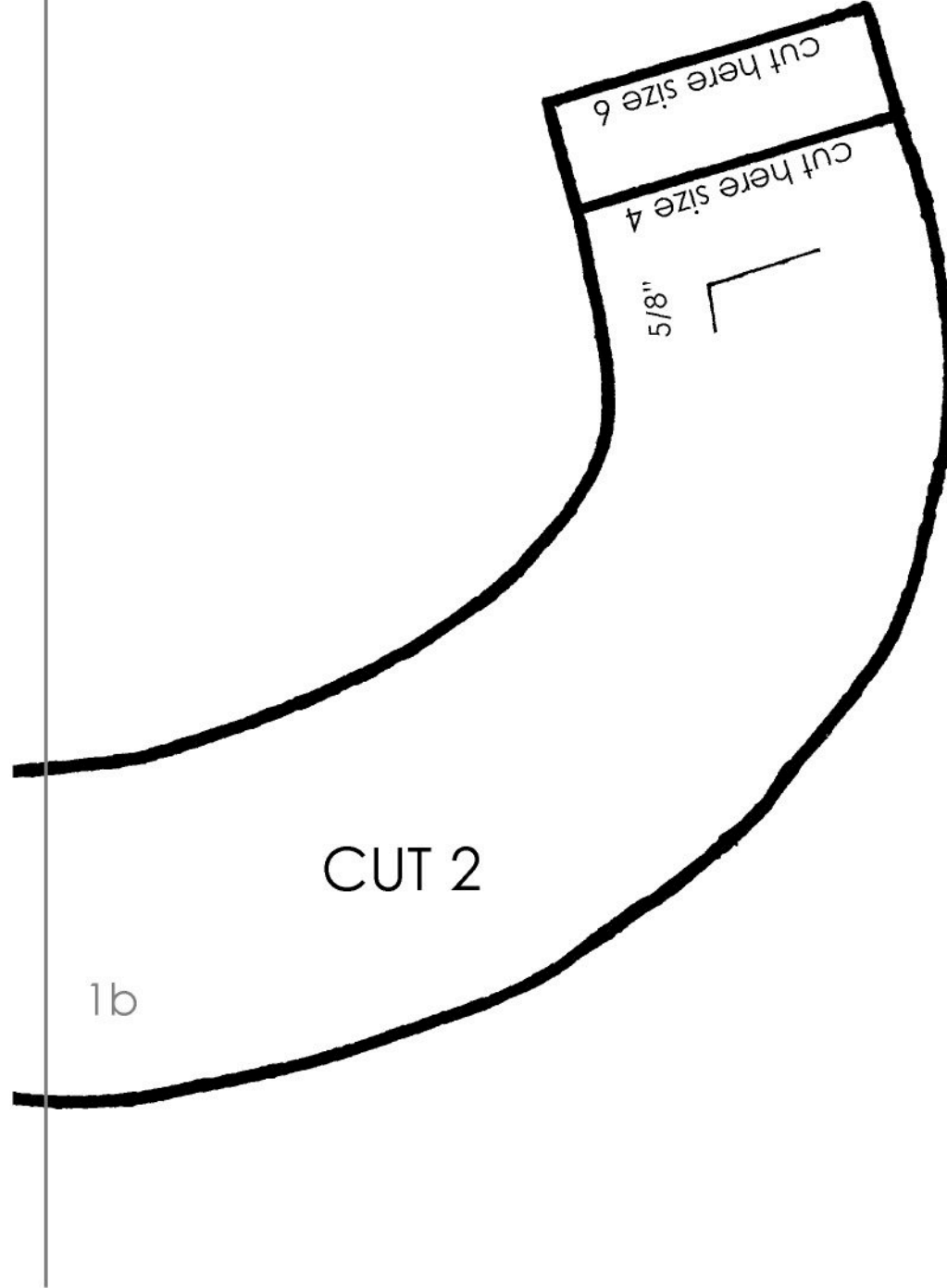
STEP EIGHT: LINING

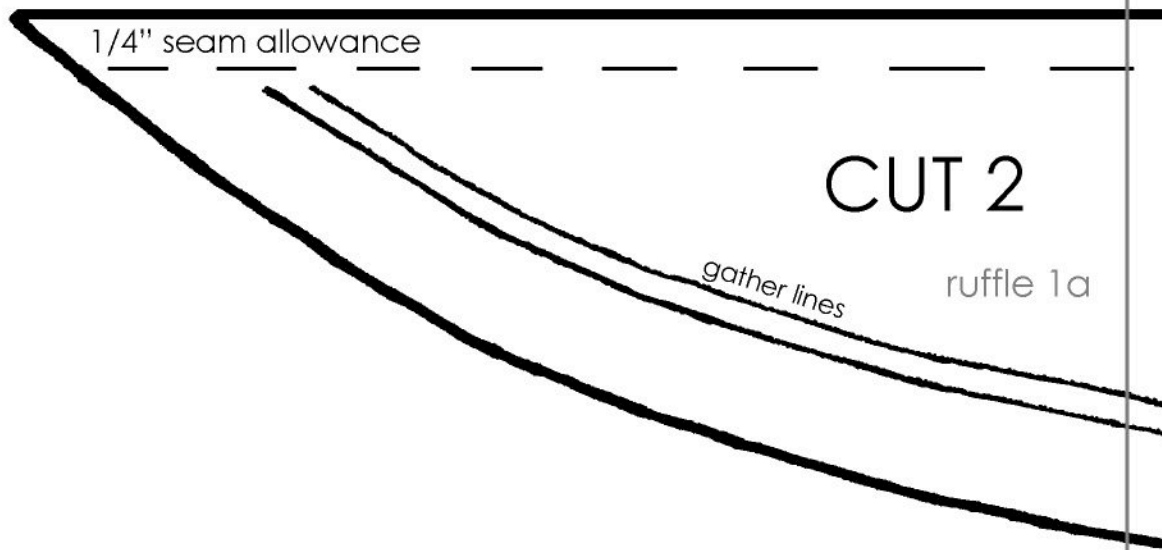
Sew Lining together at center back seam up to notch. Baste under 5/8" along open edge. Sew up side seams. With **RIGHT SIDES TOGETHER**, join Lining to Skirt along lower edge matching centers and side seams. Trim seam. Turn lining to **INSIDE**. Sew in place to waistline seam, having back opening edges of skirt even.

Sew hook and eye at neck edge. Turn facings to **INSIDE**. Press. Tack facings to seams.

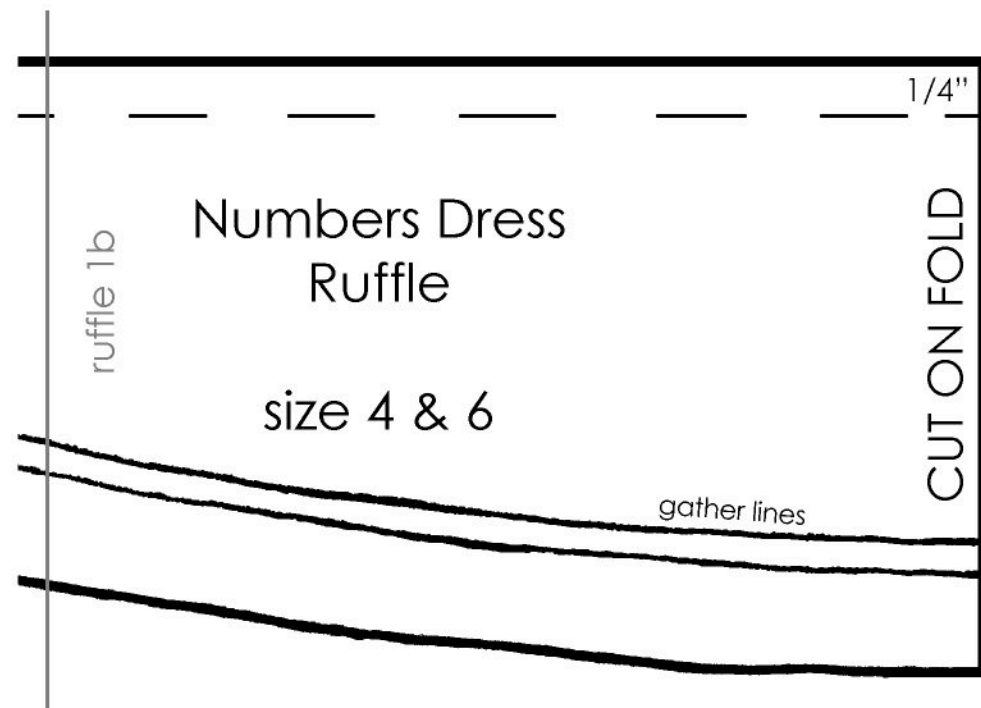
Press dress thoroughly.

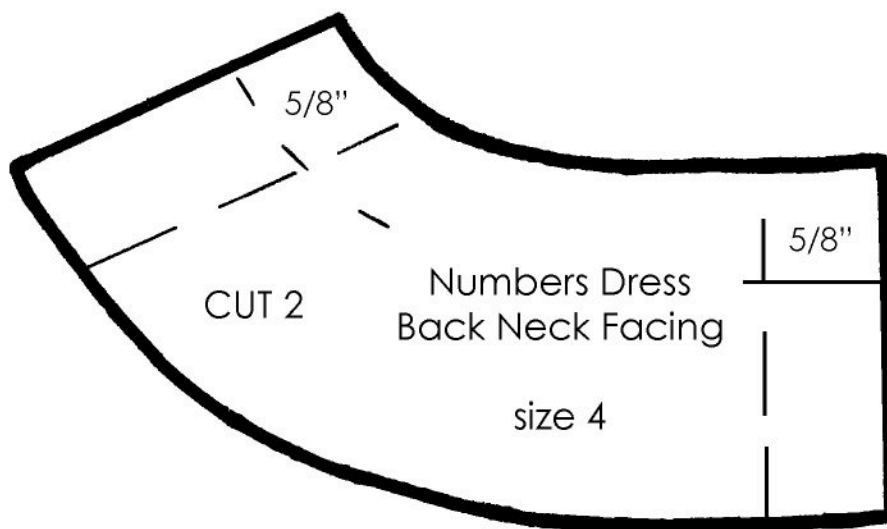
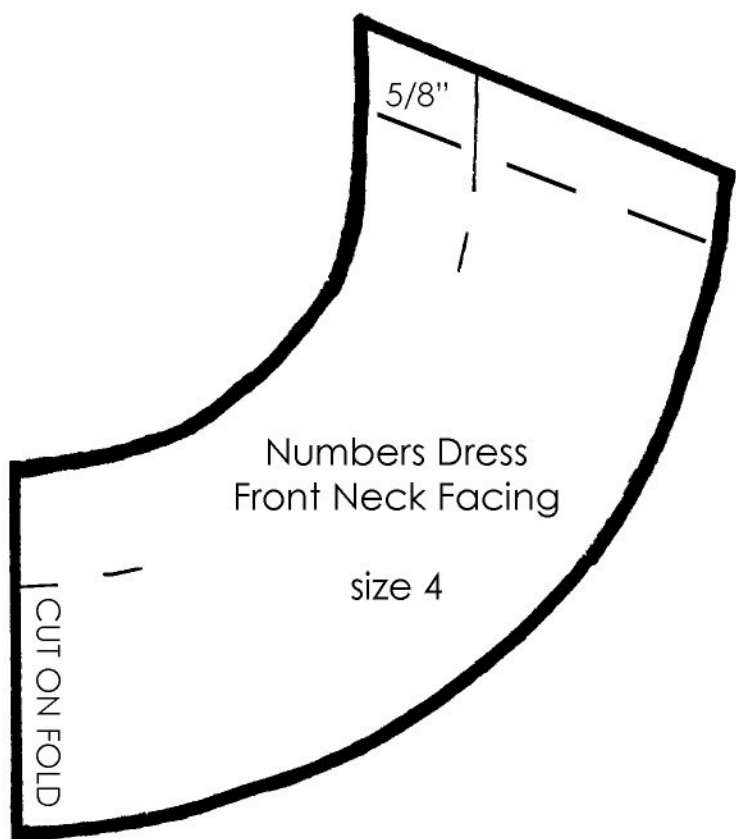


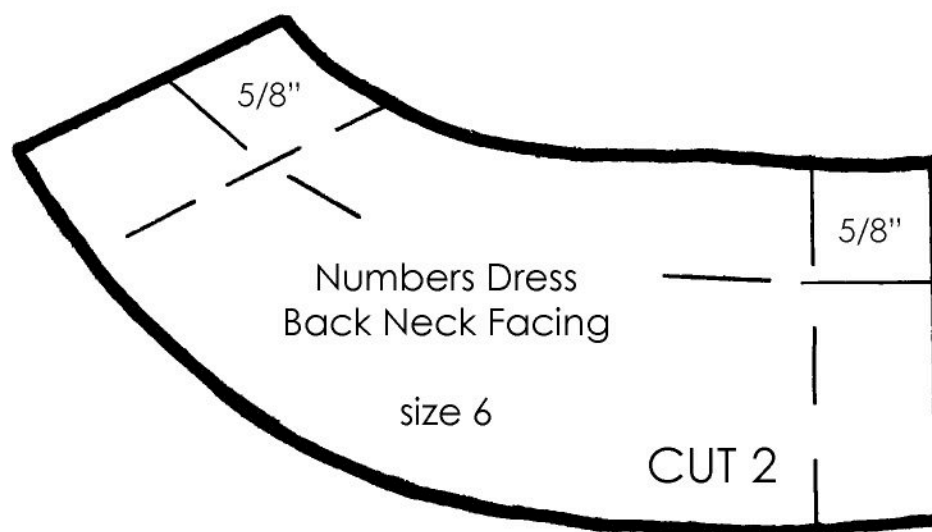
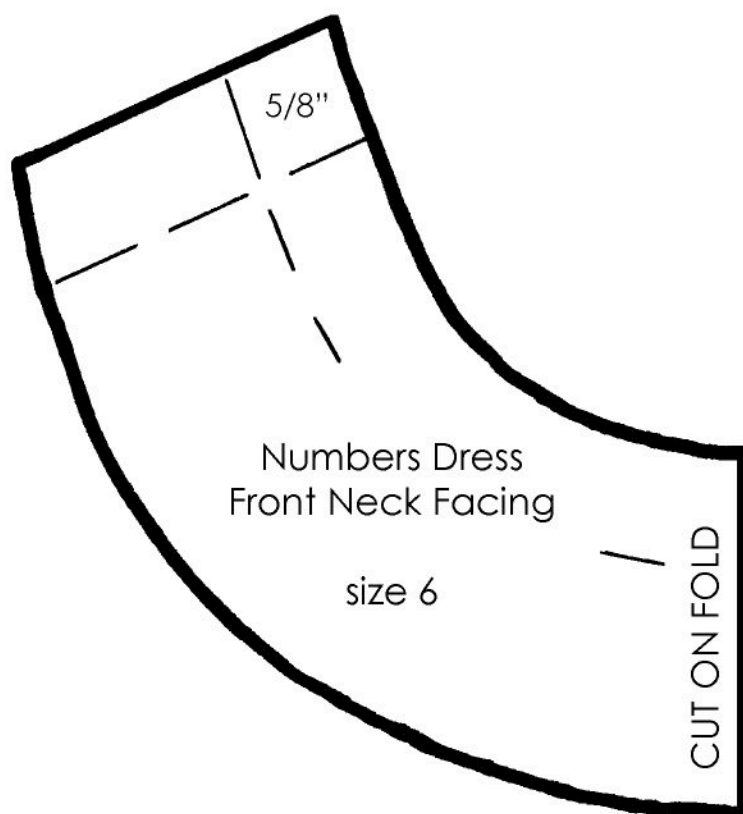


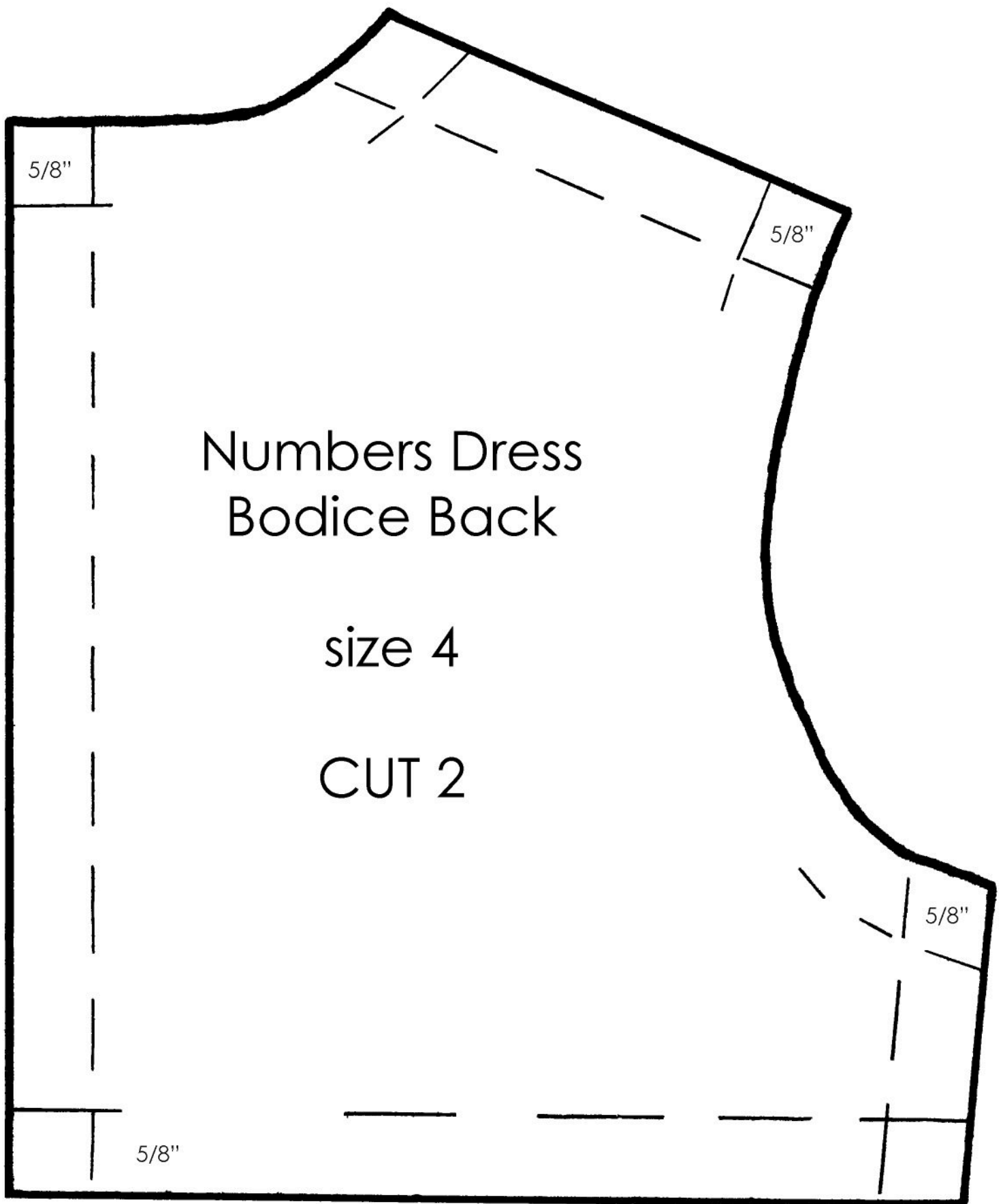


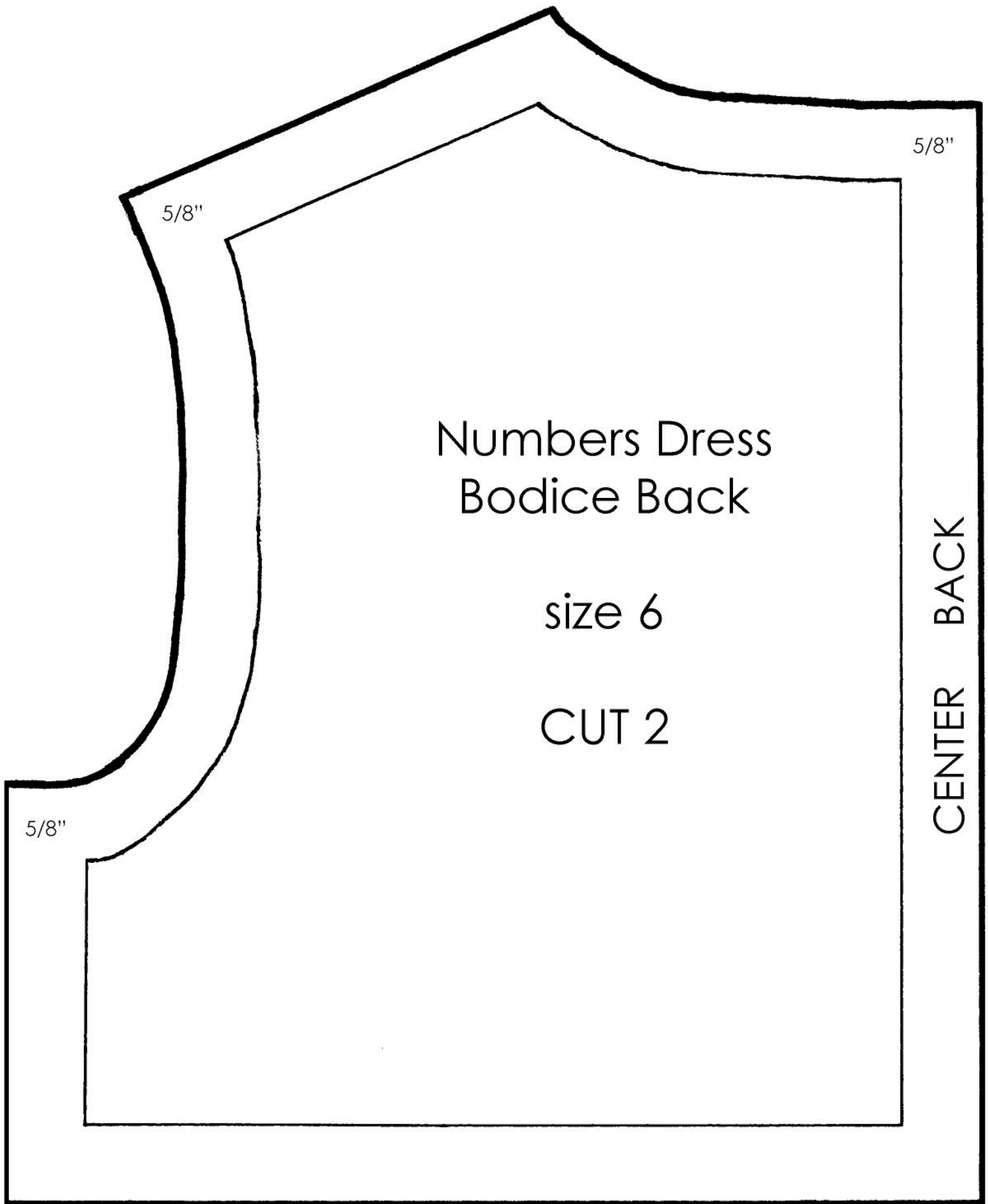
Cut sheet along this line to tape pattern pieces 1a & 1b together











5/8"

5/8"

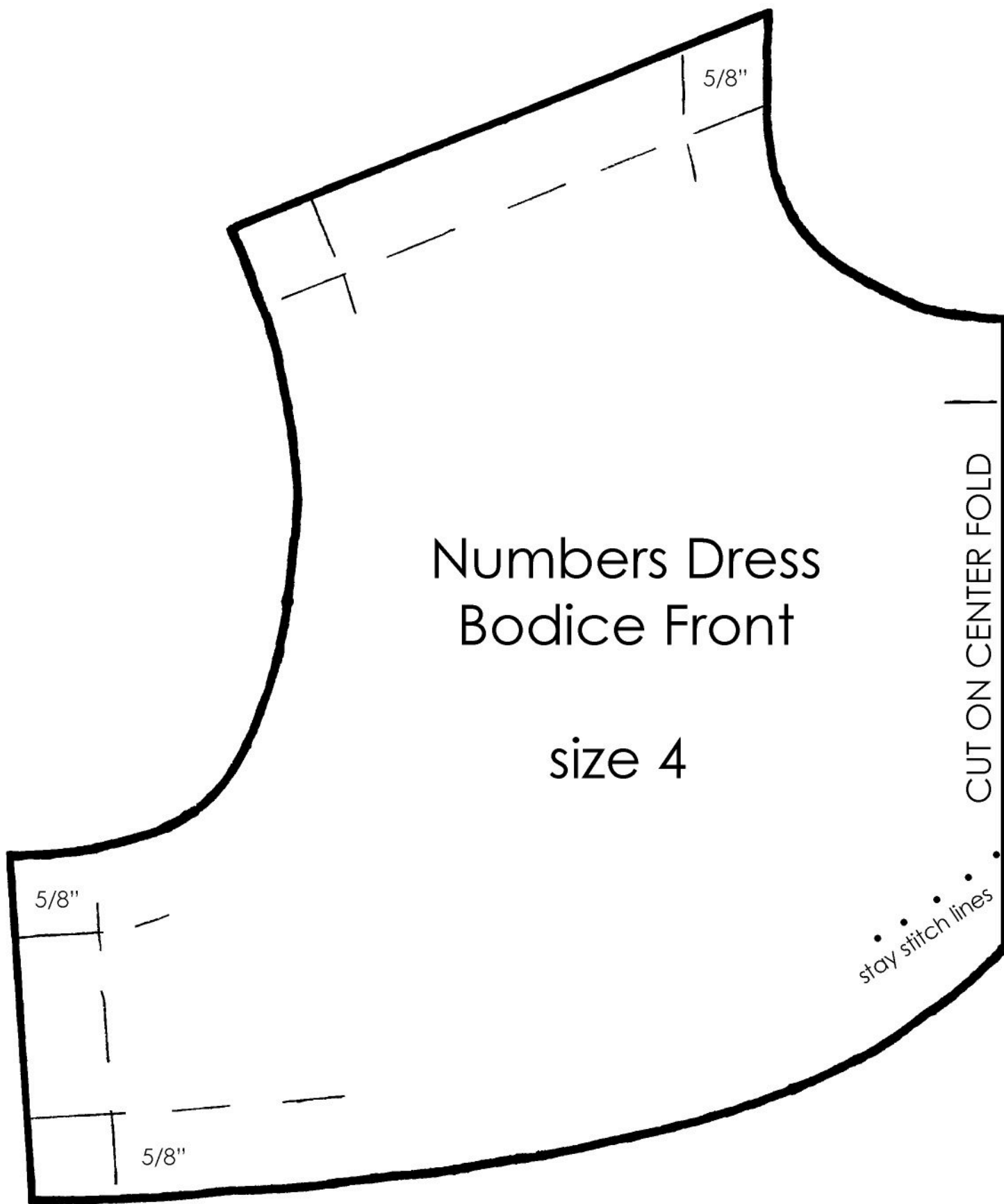
Numbers Dress
Bodice Back

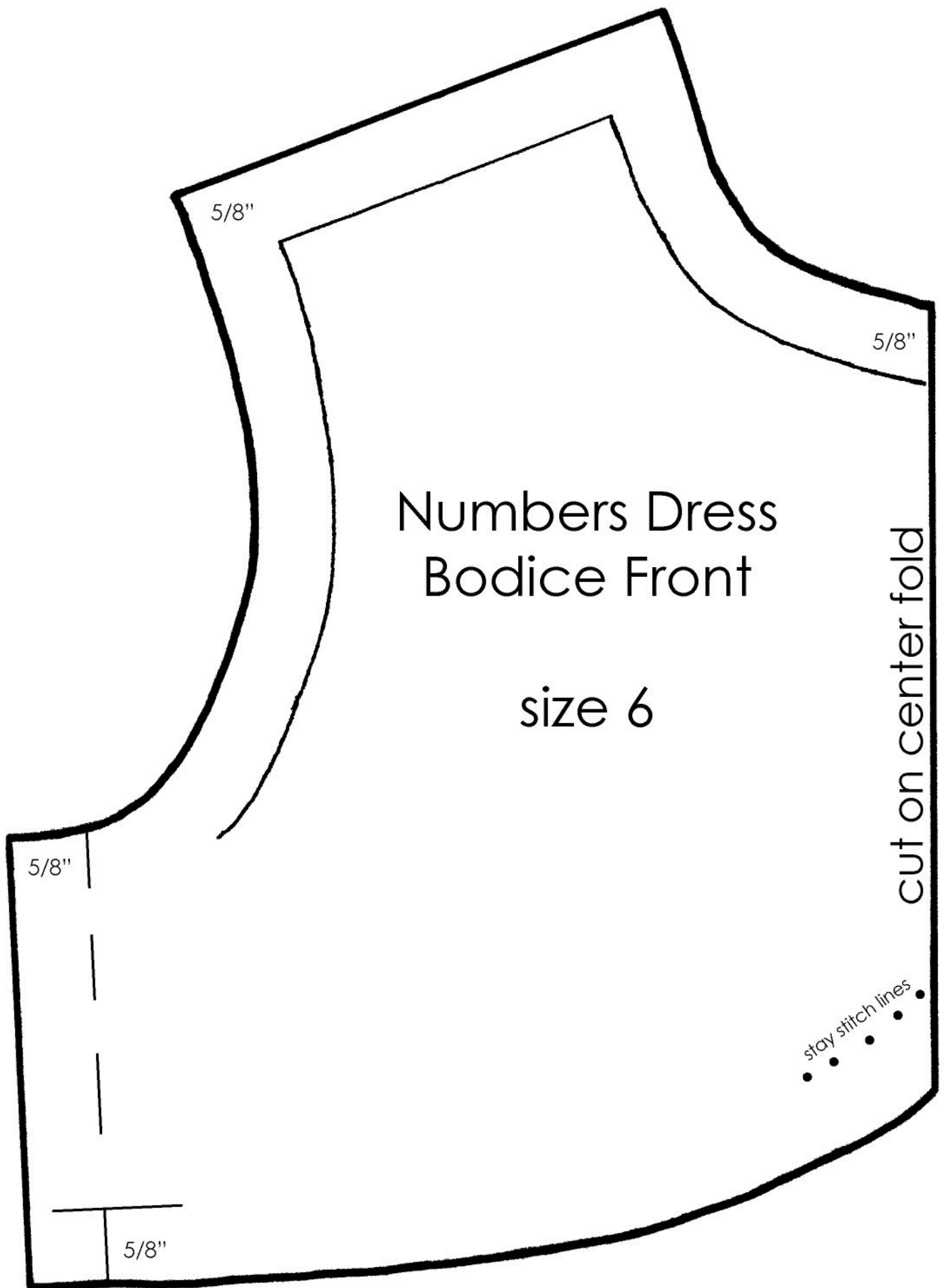
size 6

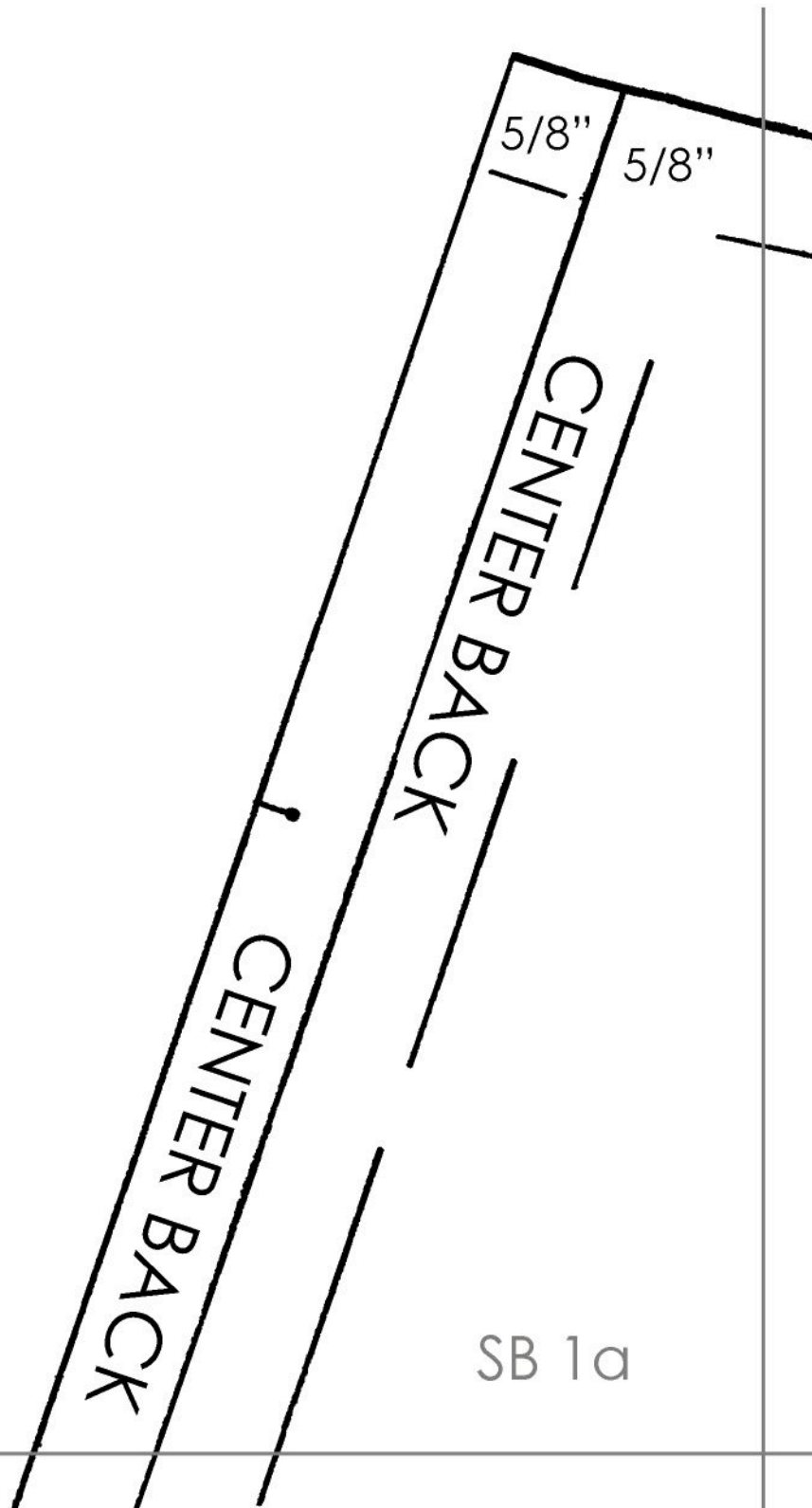
CUT 2

5/8"

CENTER BACK









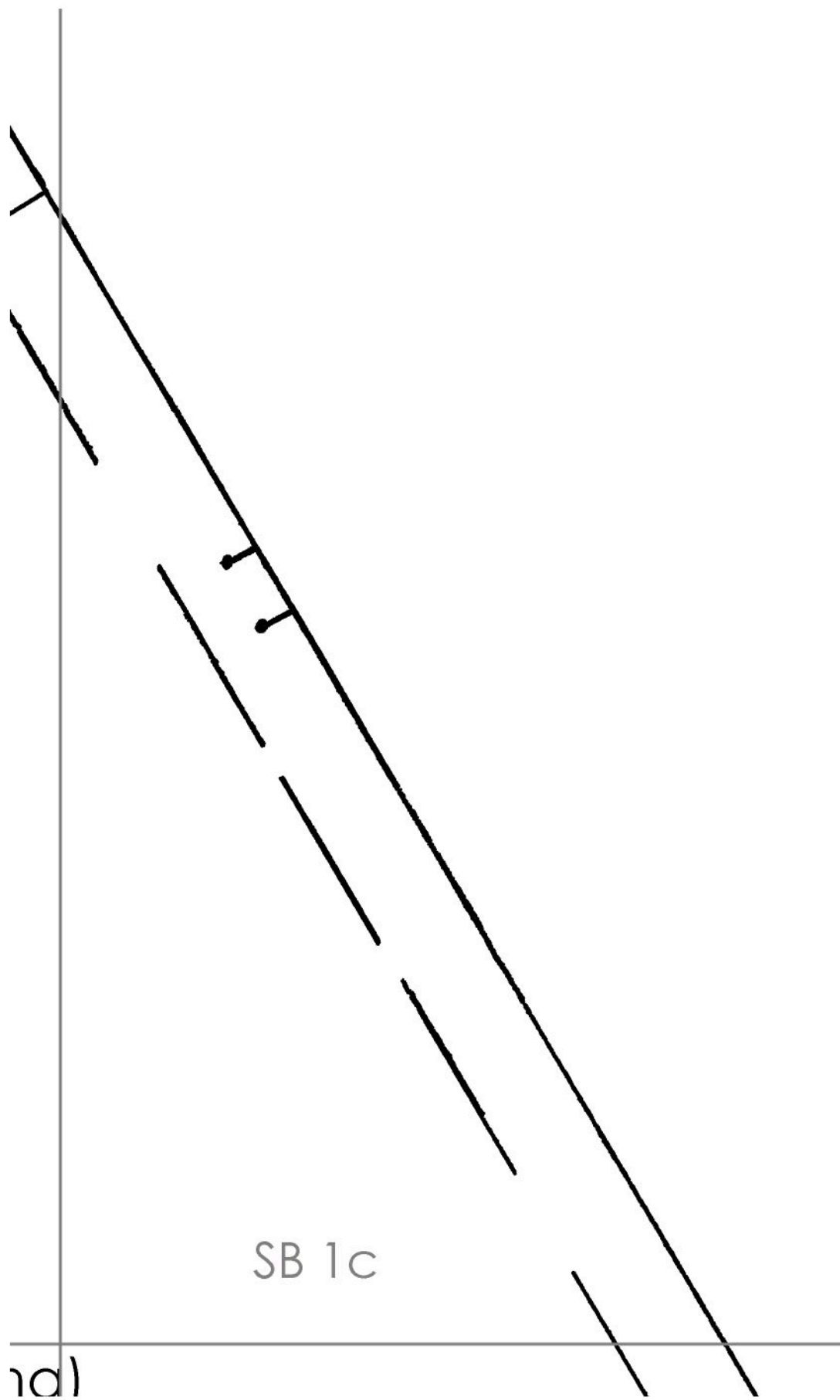
Numbers Dress
Skirt Back

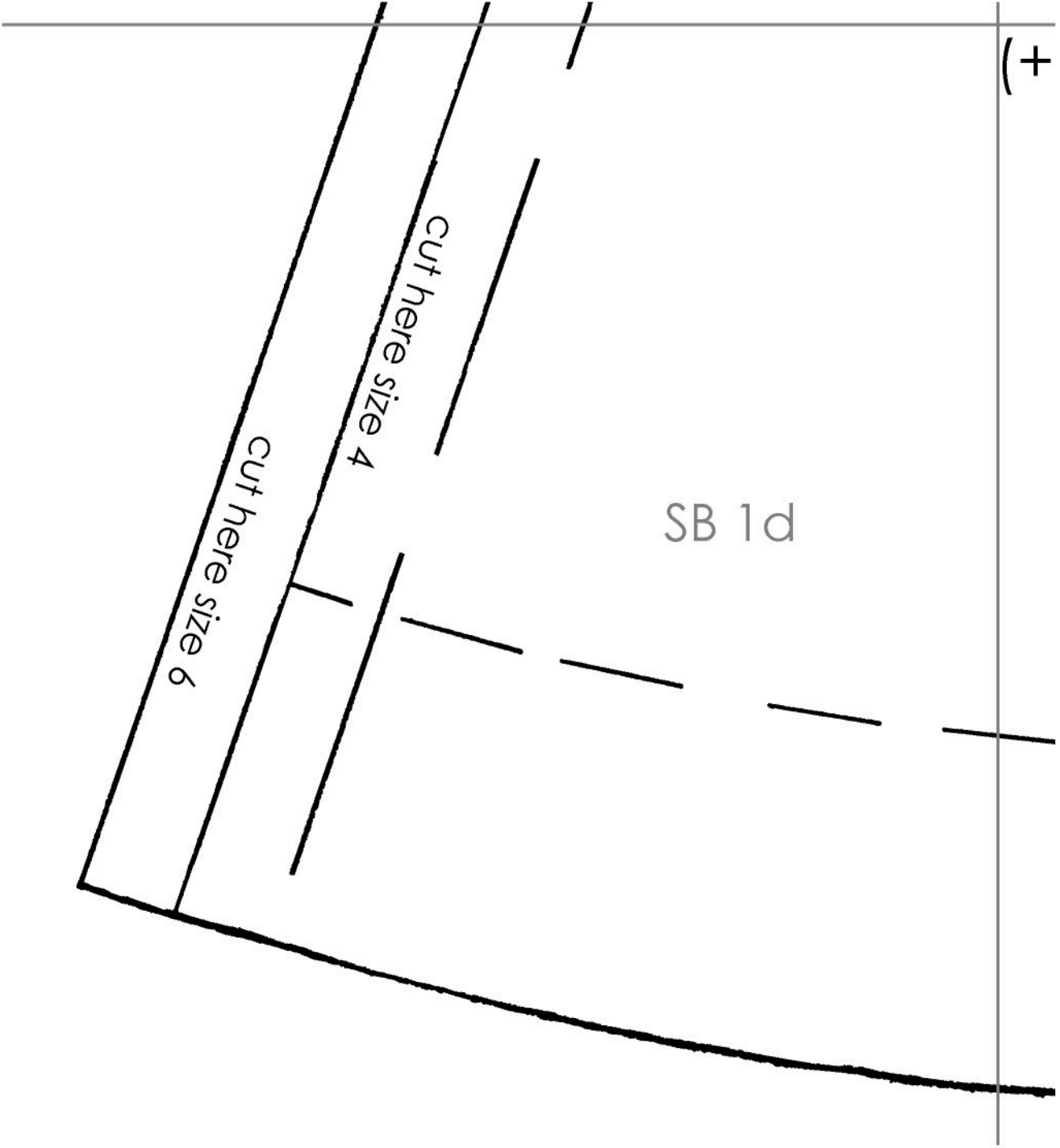
size 4 & 6

CUT 2

SB 1b

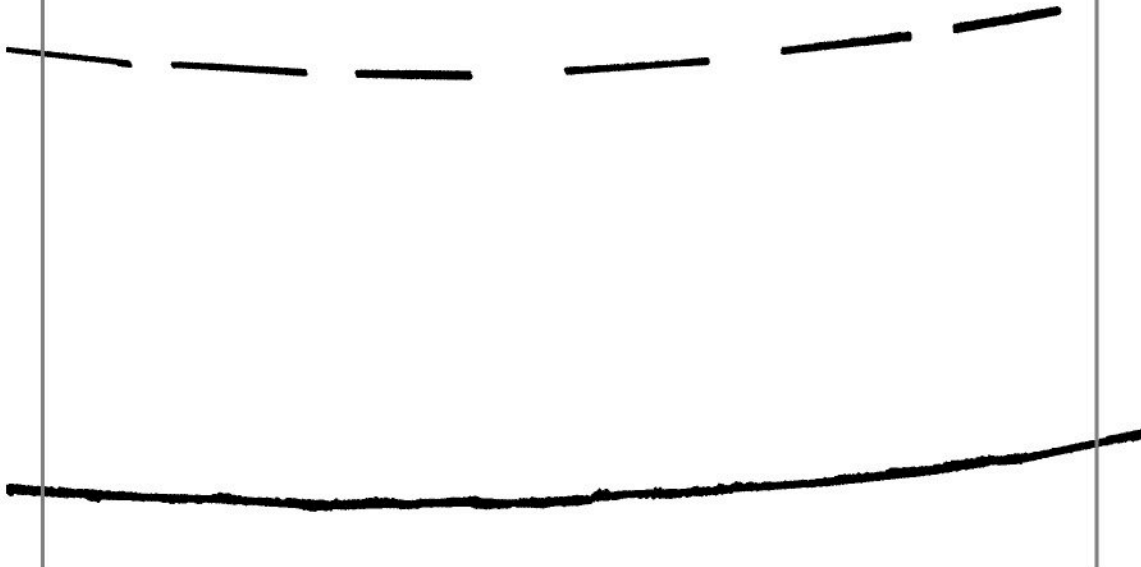
(+2 contrasting color for lining)





(+2 contrasting color for lining)

SB 1e



g)

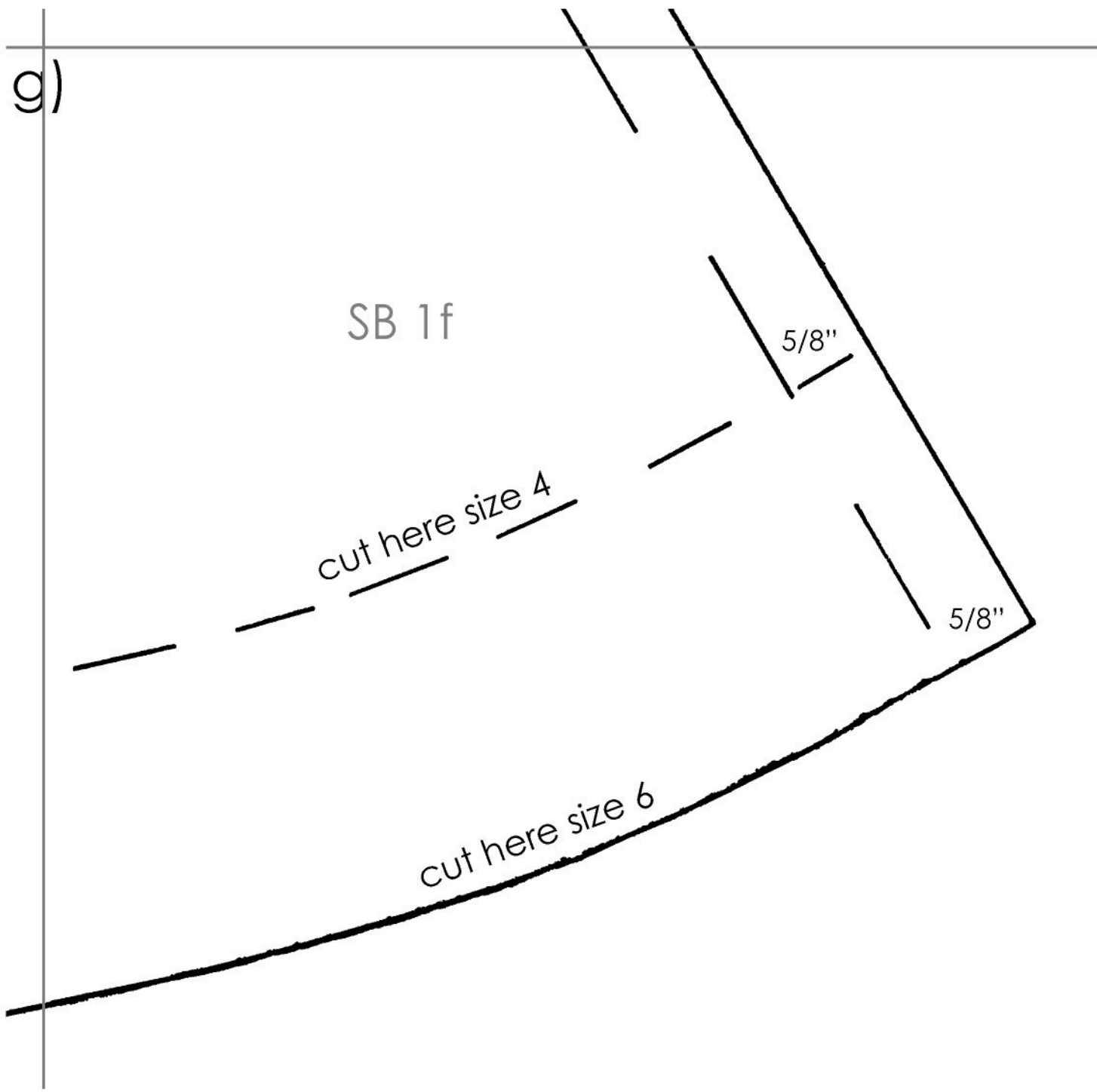
SB 1f

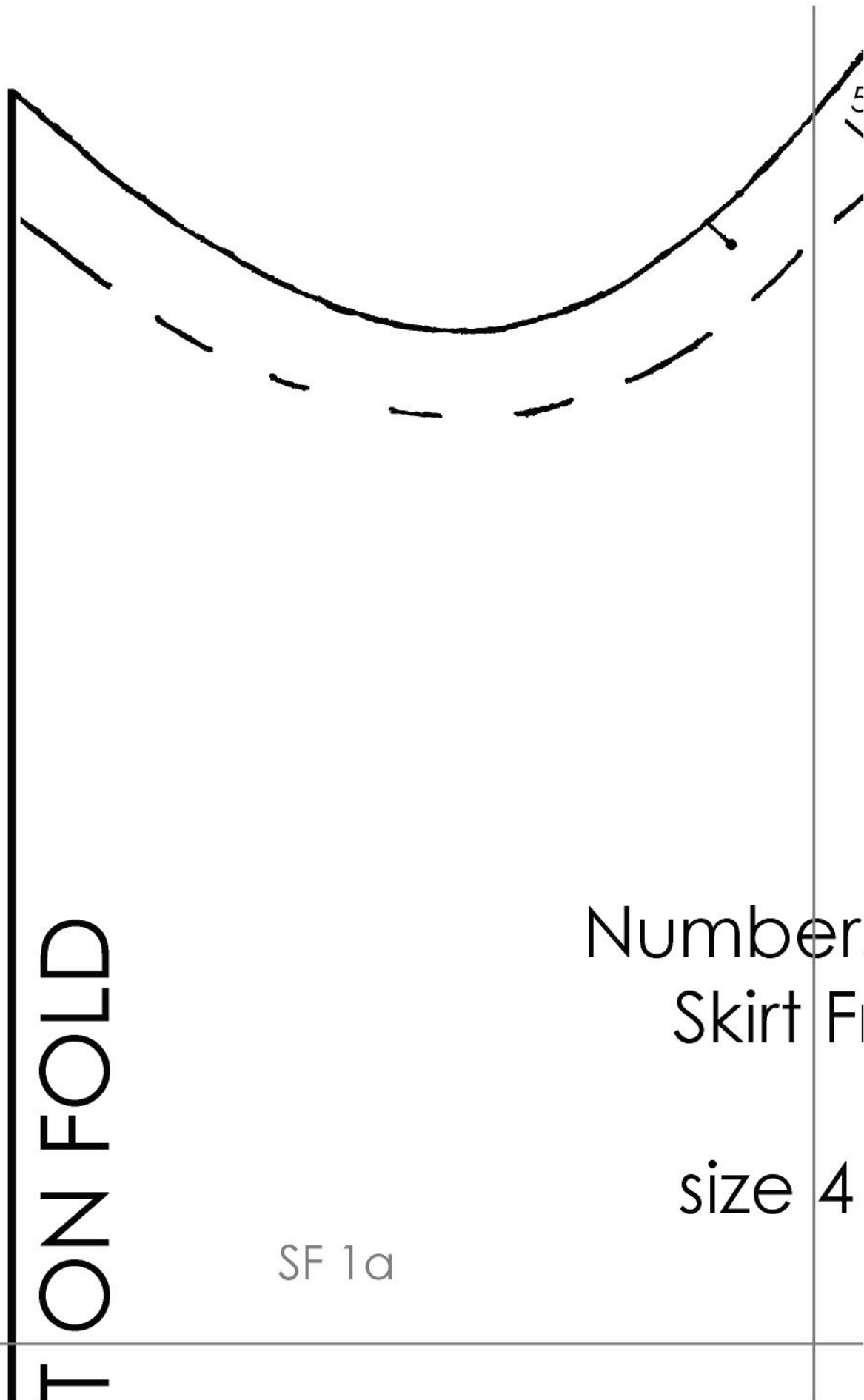
cut here size 4

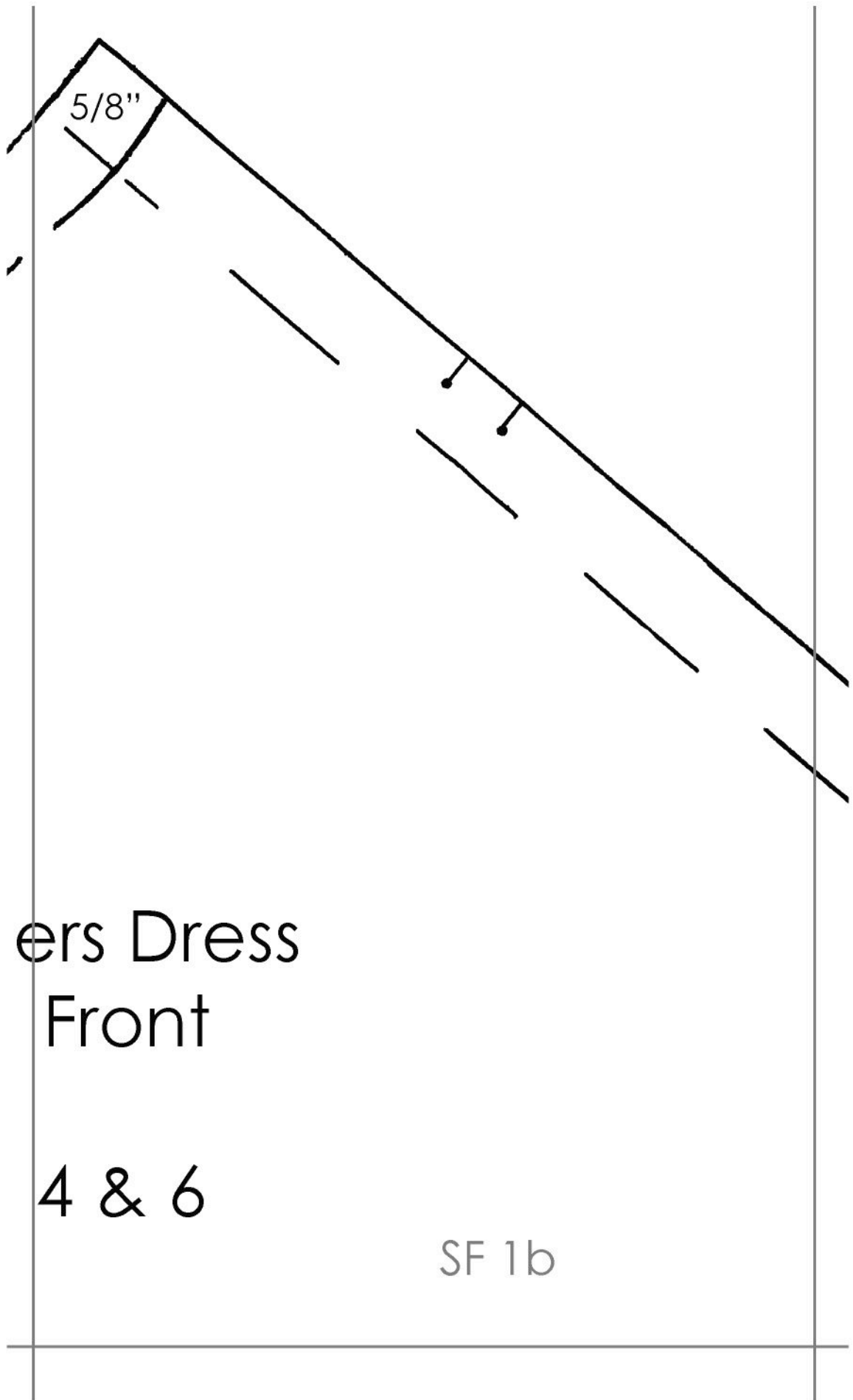
cut here size 6

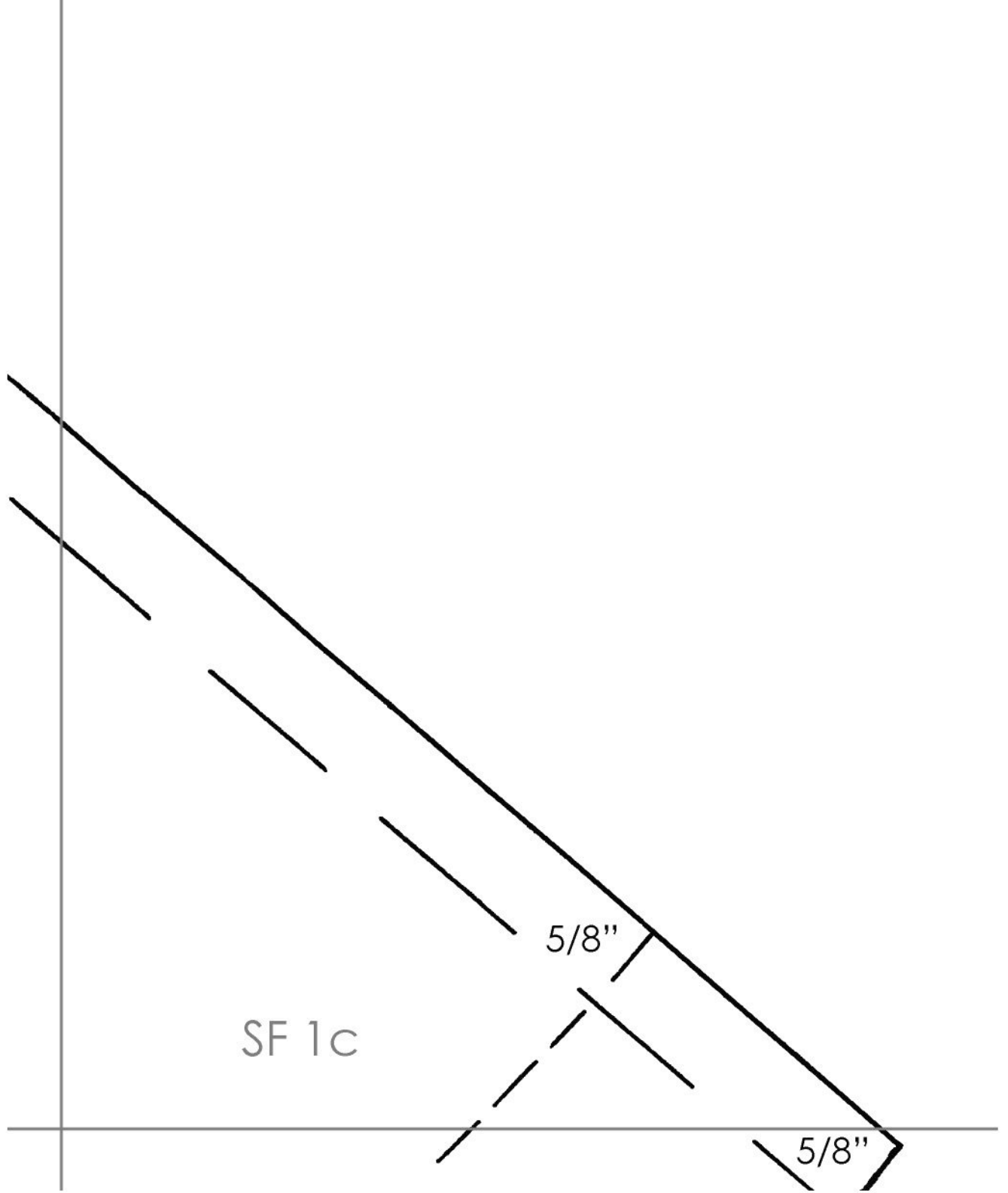
5/8"

5/8"







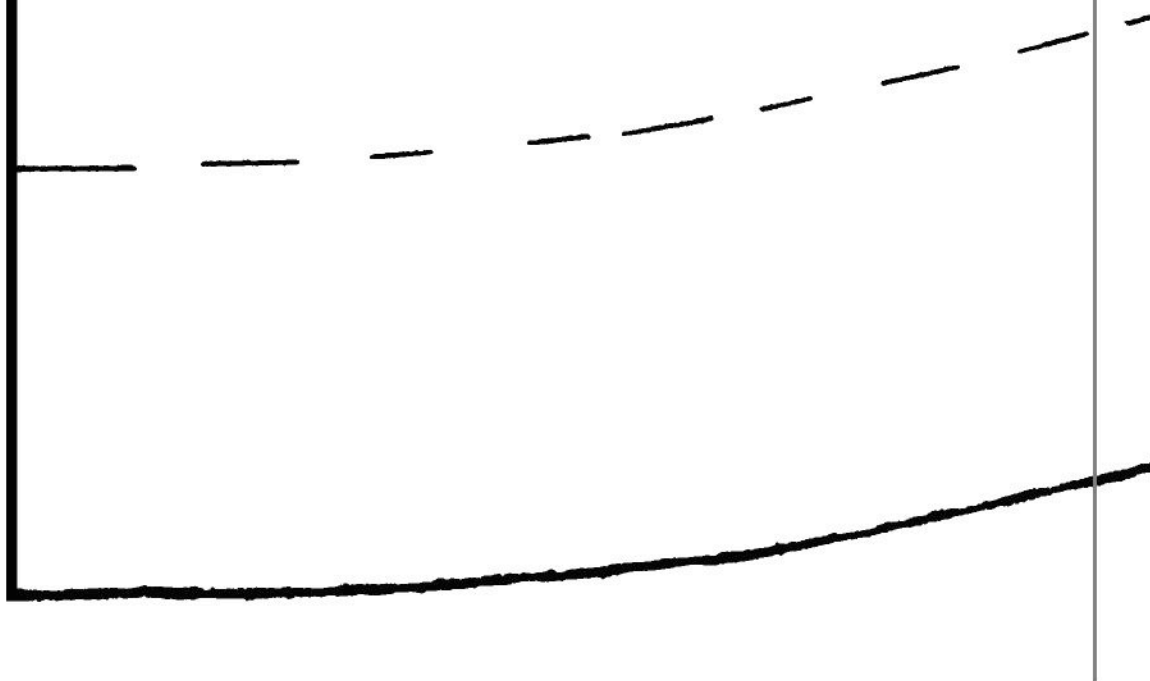


CUT (

CU

(+1 contrasting

SF 1d



CUT 1

(sting color for lining)

SF 1e

